

WAAS
CH **86727**
W21A

APP CRS
210°

Rwy Idg
TDZE **857**
Apt Elev **859**

RNAV (GPS) RWY 21

MID-OHIO VALLEY RGNL (PKB)

RNP APCH.

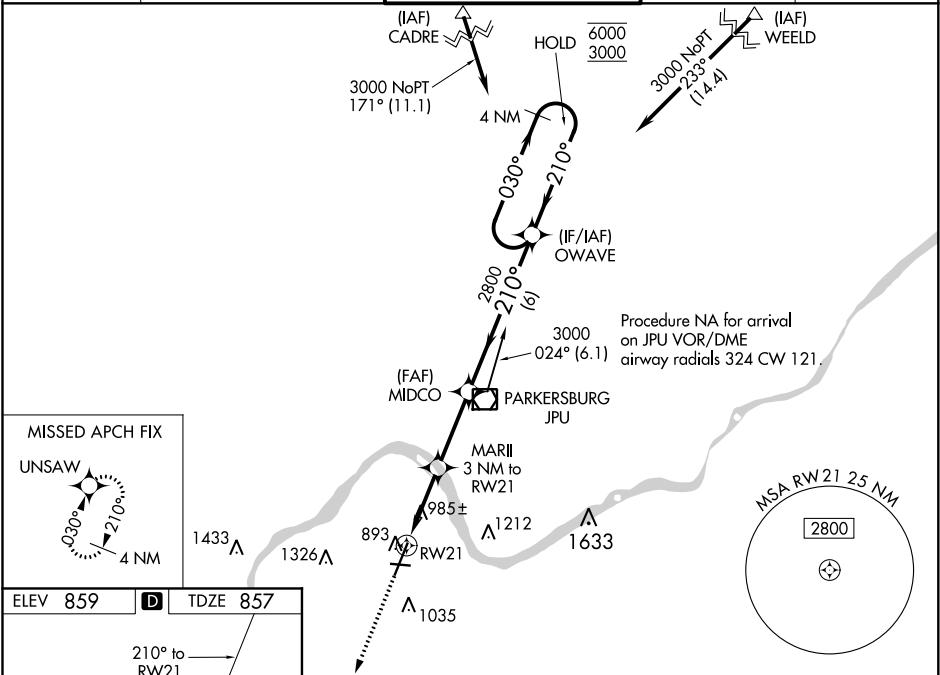
▼

⚠

Baro-VNAV and VDP NA when using Athens/Albany altimeter setting. Rwy 21 helicopter visibility reduction below ¾ SM NA. For uncompensated Baro-VNAV systems, procedure NA below -17°C or above 38°C. When local altimeter setting not received, use Athens/Albany altimeter setting and increase LPV DA to 1249, LNAV/VNAV DA to 1237, and all MDA 100 feet: Increase LPV all Cats visibility to 1½ SM, LNAV/VNAV all Cats and LNAV Cats C/D visibility to 1¾ SM, and Circling Cat C to 1¾ SM. Circling Rwy 10, 28 NA at night.

MISSED APPROACH:
Climb to 3000 direct
UNSAW and hold.

ATIS 124.35	INDIANAPOLIS CENTER 125.55 398.9	PARKERSBURG TOWER ★ 123.7 (CTAF) 0 257.8	GND CON 121.7	UNICOM 122.95
-----------------------	--	--	-------------------------	-------------------------



ELEV **859** **D** TDZE **857**

210° to RWY 21

7240 X 150

4002

28

0.85 UP

AS

TWR 918

3000

UNSAW

MARII 3 NM to RWY 21

MIDCO 2800

OWAVE

4 NM Holding Pattern

030° → 6000

← 210° 3000

GP 3.00°

TCH 56

CATEGORY	A	B	C	D
LPV DA		1149-¾	292 (300-¾)	
LNAV/VNAV DA		1137-¾	280 (300-¾)	
LNAV MDA	1240-1	383 (400-1)	1240-1½	383 (400-1½)
CIRCLING	1320-1 461 (500-1)	1340-1 481 (500-1)	1360-1½ 501 (600-1½)	1420-2 561 (600-2)