

VOR/DME CKB
112.6
Chan 73

APP CRS
042°

Rwy Idg
TDZE
Apt Elev
N/A
N/A
1224

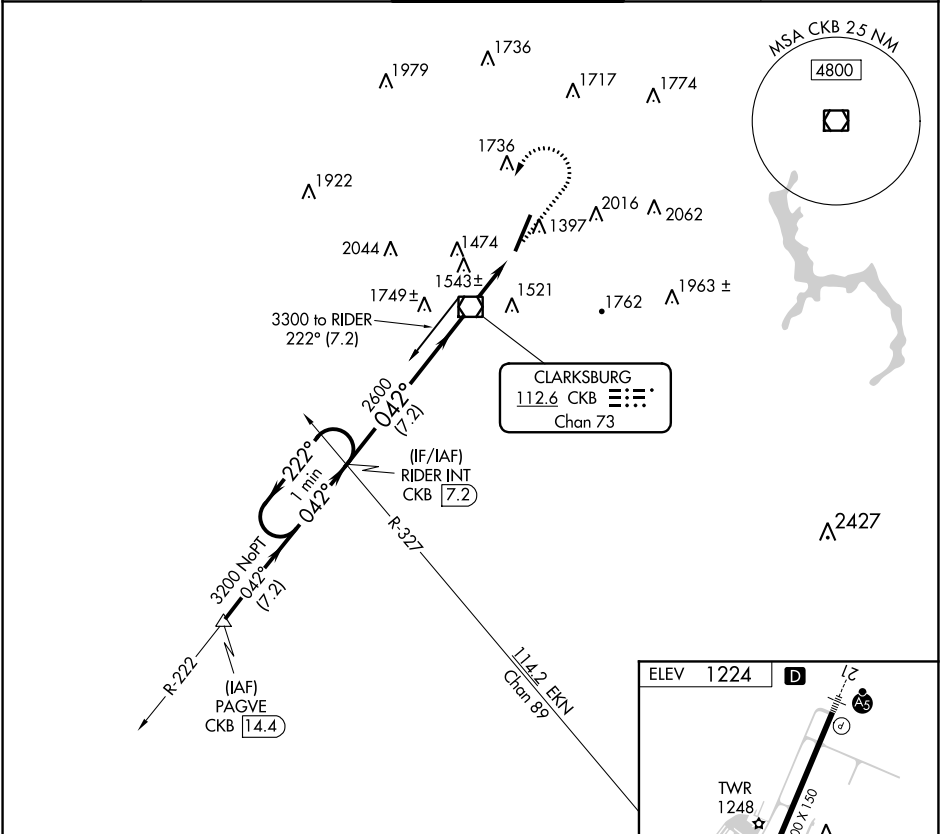
VOR-A

NORTH CENTRAL WEST VIRGINIA (CKB)

When local altimeter setting not received, Use Morgantown altimeter setting and increase all MDA 80 feet.

MISSED APPROACH: Climb to 2400, then climbing left turn to 3200 direct CKB VOR/DME and via CKB VOR/DME R-222 to RIDER INT/CKB 7.2 DME and hold.

ATIS 127.825	CLARKSBURG APP CON★ 121.15 284.65	CLARKSBURG TOWER★ 126.7 (CTAF) 257.925	GND CON 121.9	UNICOM 123.0
-----------------	--------------------------------------	---	------------------	-----------------



One Minute Holding Pattern

RIDER INT CKB 7.2

3200 ← 222° 042° → 2600

2400 3200 CKB CKB RIDER INT

CKB VOR/DME

YEDUG CKB 2.6

7.2 NM 2.6 NM

ELEV 1224 D

TWR 1248

1280 A

7800 x 150

A 1238

0.5% Up

A 1227±

042° 2.6 NM from FAF

REIL Rwy 3

HIRL Rwy 3-21

CATEGORY	A	B	C	D
CIRCLING	1940-1 716 (800-1)	2040-1¼ 816 (900-1¼)	2320-3 1096 (1100-3)	

FAF to MAP 2.6 NM				
Knots	60	90	120	150 180
Min:Sec	2:36	1:44	1:18	1:02 0:52