

LOC I-CKB	APP CRS	Rwy Idg	7130
109.3	211°	TDZE	1224
		Apt Elev	1224

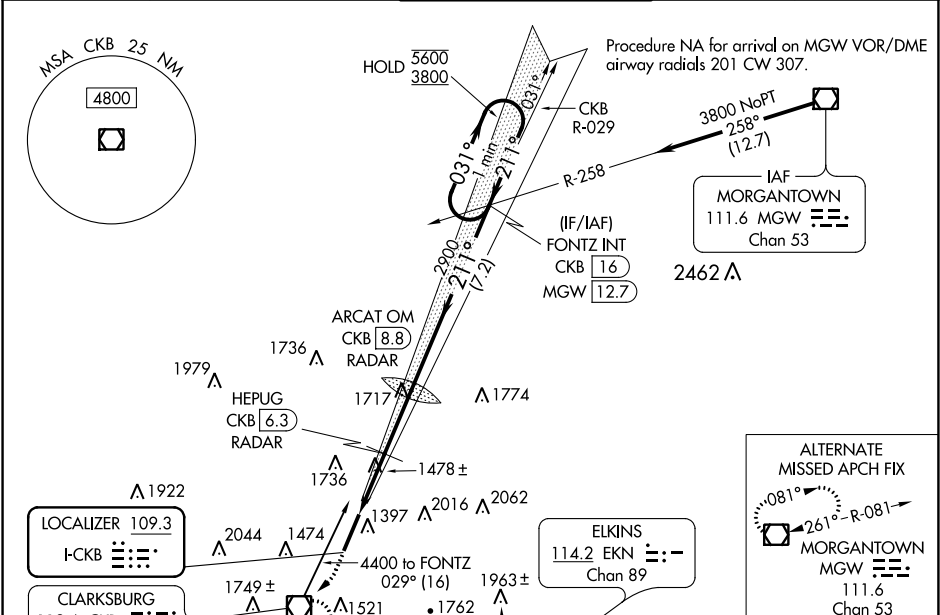
ILS or LOC RWY 21
NORTH CENTRAL WEST VIRGINIA (CKB)



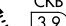


⚠ For inop ALS, increase S-LOC 21 Cat C/D visibility to 2½ SM, and HEPUG fix minimums Cat C/D visibility to 1½ SM. DME from CKB VOR/DME.

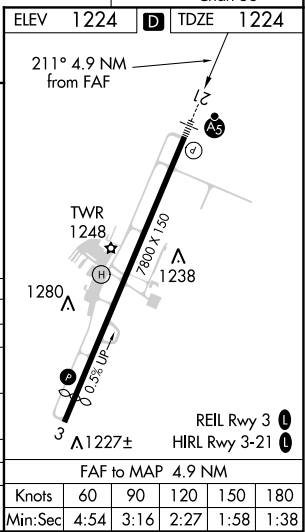
MALSR

MISSED APPROACH: Climb to 1800 then climbing right turn to 3200 direct CKB VOR/DME and hold, continue climb-in-hold to 3200.

ATIS 127.825	CLARKSBURG APP CON ★ 121.15 284.65	CLARKSBURG TOWER ★ 126.7 (CTAF) 0 257.925	GND CON 121.9	UNICOM 123.0
------------------------	--	---	-------------------------	------------------------



112.6 CKB Chan 73		R-222 042° 222°		4400 to FONTZ 005° (34.7)					
1800 3200 CKB 		HEPUG CKB 6.3 RADAR		ARCAT OM CKB 8.8 RADAR		FONTZ INT CKB 16		One Minute Holding Pattern	
* LOC only.		* CKB 5.3		2878		211°		031° → 5600 ← 211° 3800	
		CKB 3.9		* 2020		2900		GS 3.00° TCH 60	
1.4 NM		1 NM		2.5 NM		7.2 NM			
CATEGORY		A		B		C		D	
S-ILS 21				1424/24		200 (200-½)			
S-LOC 21		2020/24 796 (800-½)		2020/40 796 (800-¾)		2020-1¾ 796 (800-1¾)			
 CIRCLING		2020-1 796 (800-1)		2040-1¼ 816 (900-1¼)		2320-3 1096 (1100-3)			
HEPUG FIX MINIMUMS (DME or RADAR REQUIRED)									
S-LOC 21		1740/24 516 (600-½)		1740/55 516 (600-1)					
 CIRCLING		1940-1 716 (800-1)		2040-1¼ 816 (900-1¼)		2320-3 1096 (1100-3)			



NE-4, 31 DEC 2020 to 28 JAN 2021

NE-4, 31 DEC 2020 to 28 JAN 2021