

WAAS CH 81826 W10B	APP CRS 101°	Rwy Idg TDZE Apt Elev	10502 1203 1203
--	------------------------	-----------------------------	--

RNAV (GPS) RWY 10L

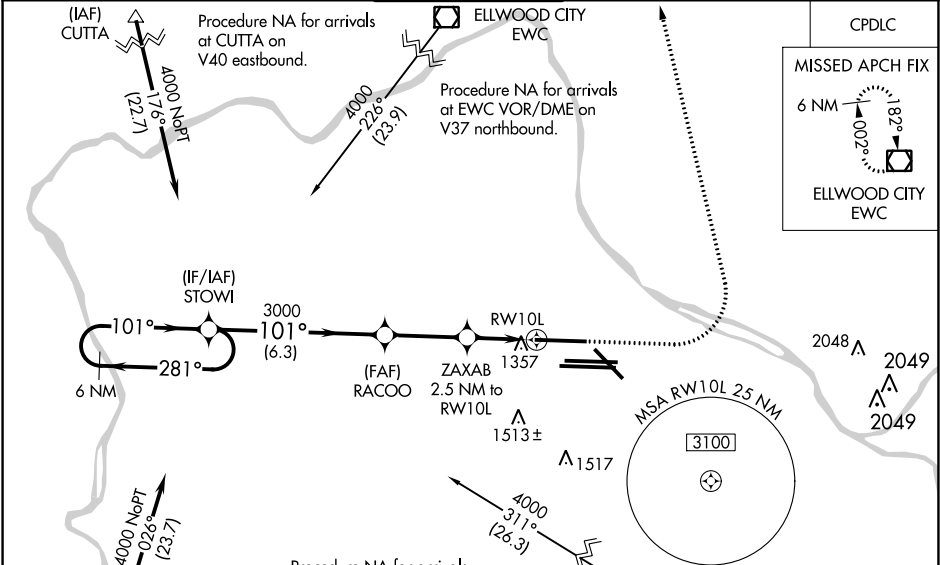
PITTSBURGH INTL (PIT)

⚠ For uncompensated Baro-VNAV systems, LNAV/VNAV NA below -18°C (0°F) or above 54°C (130°F). Simultaneous approach authorized.
⚠ DME/DME RNP-0.3 NA. For inop ALS, increase LNAV Cats C/D visibility to RVR 6000. LNAV procedure NA during simultaneous operations. Use of FD or AP required during simultaneous operations.

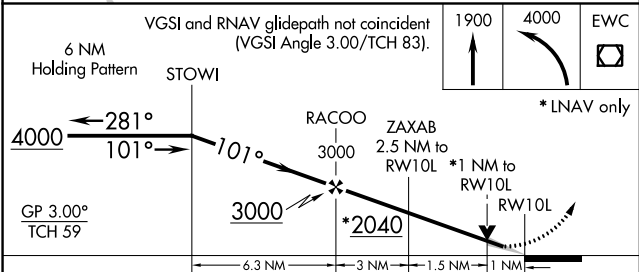
ALSF-2

MISSED APPROACH: Climb to 1900 then climbing left turn to 4000 direct EWC VOR/DME and hold.

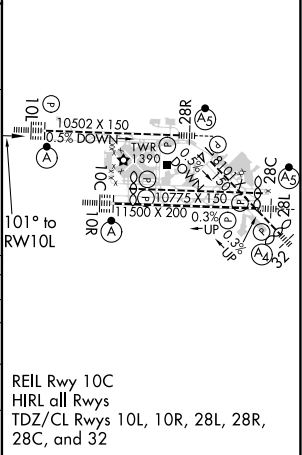
D-ATIS ARR 127.25 DEP 135.9	PITTSBURGH APP CON 123.95 360.8	PITTSBURGH TOWER 128.3 291.7	GND CON SOUTH 121.9 348.6 NORTH 127.8 348.6	CLNC DEL 126.75 353.7
---	---	--	---	---------------------------------



ELEV 1203	D	TDZE 1203
------------------	----------	------------------



CATEGORY	A	B	C	D
LPV DA		1403/18	200 (200-½)	
LNAV/VNAV DA		1635/40	432 (500-¾)	
LNAV MDA	1620/24	417 (500-½)	1620/40	417 (500-¾)
C CIRCLING	1700-1	497 (500-1)	1880-2 677 (700-2)	1880-2¼ 677 (700-2¼)



NE-4, 31 DEC 2020 to 28 JAN 2021

NE-4, 31 DEC 2020 to 28 JAN 2021