

ILS or LOC RWY 32  
PITTSBURGH INTL (PIT)

**MISSED APPROACH:** Climb to 1800 then climbing right turn to 4000 direct FWC VOR/DME and hold

MISSIED APCH FIX

ELLWOOD CITY  
EWC  
115.8  
Chan 105

WISNO  
AGC [28.1]

AGC  
R-352

LOCALIZER 111.3  
I-TQW  
Chan 50

ZANTA  
I-TQW [3.4]

1357 A  
1176±  
1513 ±  
1517

2048  
2049  
2049

(IF)  
WYLER  
I-TQW [10.4]  
RADAR  
R-355

TRINY INT  
I-TQW [5.6]  
RADAR  
4000  
355° (5.8)

IAF  
ALLEGHENY  
110.0 AGC  
Chan 37

WHEELING  
112.2 HLG  
Chan 59

R-069

352°  
355°  
355°  
145°

DME or RADAR  
REQUIRED

ALTERNATE MISSED  
APCH FIX

WISNO  
AGC [28.1]

110.0 AGC  
R-352  
Chan 37

(IAF)  
GRUNZ  
I-TQW [18.4]  
RADAR

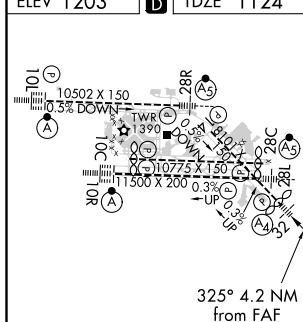
MSA AGC 25 NM

3100  
3800

270°  
360°

ELEV 1202  
TDZE 1124

ELEV 1203		TDZE 1124
-----------	---	-----------



REIL Rwy 10C  
HIRL all Rwys  
TDZ/CL Rwys 10L, 10R, 28L, 28R,  
28C, and 32

FAF to MAP 4.2 NM

Knots	60	90	120	150	180
Min:Sec	4:12	2:48	2:06	1:41	1:24

Amdt 14 01FEB18

1800 4000 EWC

VGS and ILS glidepath not coincident  
(VGS Angle 3.00/TCH 72).

GRUNZ I-TQW 18.4

WYLER I-TQW 10.4

TRINY INT I-TQW 5.6

ZANTA I-TQW 3.4

I-TQW 2.4

I-TQW 1.4

\*LOC only.

6000

4000



325°

2500

\*1760

GS 3.00°  
TCH 37

1 NM 1 NM 2.2 NM 4.7 NM 8.1 NM

CATEGORY	A	B	C	D	E
S-ILS 32	1324/40 200 (200-¾)				
S-LOC 32	1760/40	636 (600-¾)	1760-1½	636 (600-1½)	
 CIRCLING	1760-1	557 (600-1)	1880-2 677 (700-2)	1880-2¼ 677 (700-2¼)	1880-2½ 677 (700-2½)
ZANTA FIX MINIMUMS (DME REQUIRED)					
S-LOC 32	1520/40	396 (400-¾)	1520/45	396 (400-¾)	
 CIRCLING	1700-1	497 (500-1)	1880-2 677 (700-2)	1880-2¼ 677 (700-2¼)	1880-2½ 677 (700-2½)

PITTSBURGH INTL (PIT)

ILS or LOC RWY 32