

LOC I-HFE 111.7	APP CRS 281°	Rwy ldg 10102 TDZE 1174 Apt Elev 1203
---------------------------	------------------------	--

ILS RWY 28R (SA CAT I & II)
PITTSBURGH INTL (PIT)

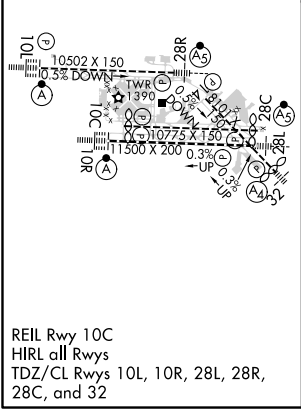
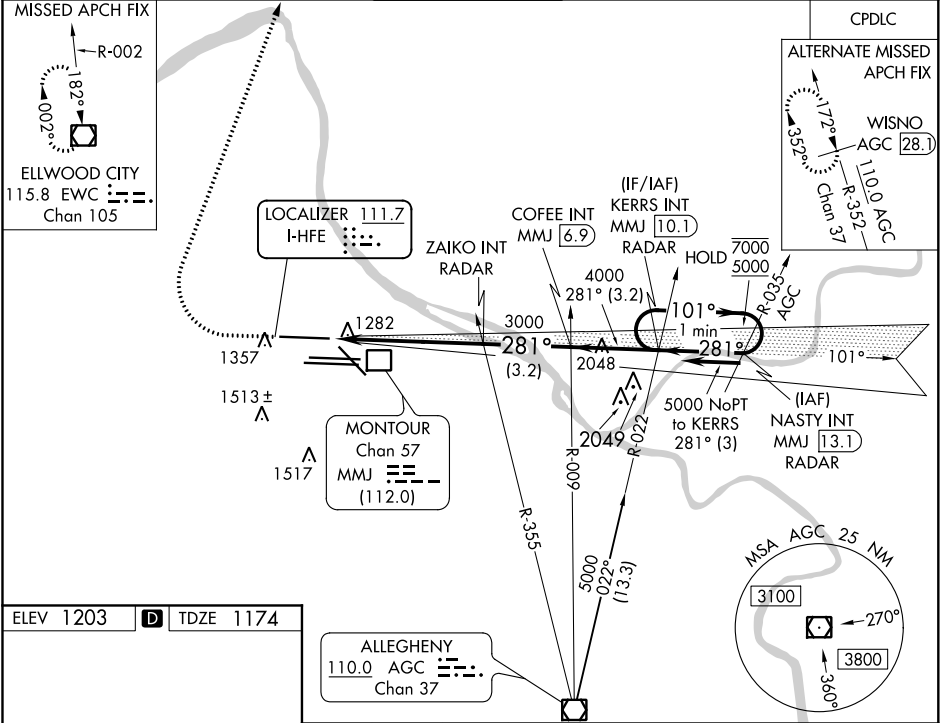
From NASTY: Radar required for procedure entry.


MALSR



MISSED APPROACH: Climb to 1800 then climbing right turn to 5000 direct EWC VOR/DME and hold.

D-ATIS ARR 127.25 DEP 135.9	PITTSBURGH APP CON 123.95 360.8	PITTSBURGH TOWER 128.3 291.7	GND CON SOUTH 121.9 348.6 NORTH 127.8 348.6	CLNC DEL 126.75 353.7
---	---	--	---	---------------------------------



1800 ↑	5000 ↗	EWC 	VGSI and ILS glidepath not coincident (VGSI Angle 3.00/TCH 71).	
ZAIKO INT RADAR		COFFEE INT MMJ <u>6.9</u>	KERRS INT MMJ <u>10.1</u> One Minute Holding Pattern	
3000		281°	101° → 7000 ← 281° 5000	
3000		4000	GS 3.00° TCH 55	
5.6 NM		3.2 NM	3.2 NM	
CATEGORY	A	B	C	D
S-ILS 28R	SA CAT I RA 192/14 150 DA 1324			
S-ILS 28R	SA CAT II RA 116/12 100 DA 1274			
SA CATEGORY I & II ILS - SPECIAL AIRCREW & AIRCRAFT CERTIFICATION REQUIRED				

NE-4, 31 DEC 2020 to 28 JAN 2021

NE-4, 31 DEC 2020 to 28 JAN 2021