

WAAS CH <b>66017</b> <b>W30A</b>	APP CRS <b>298°</b>	Rwy Idg TDZE Apt Elev	<b>6516</b> <b>828</b> <b>828</b>
--	------------------------	-----------------------------	---

RNAV (GPS) RWY 30

TRI-STATE/MILTON J FERGUSON FIELD (HTS)

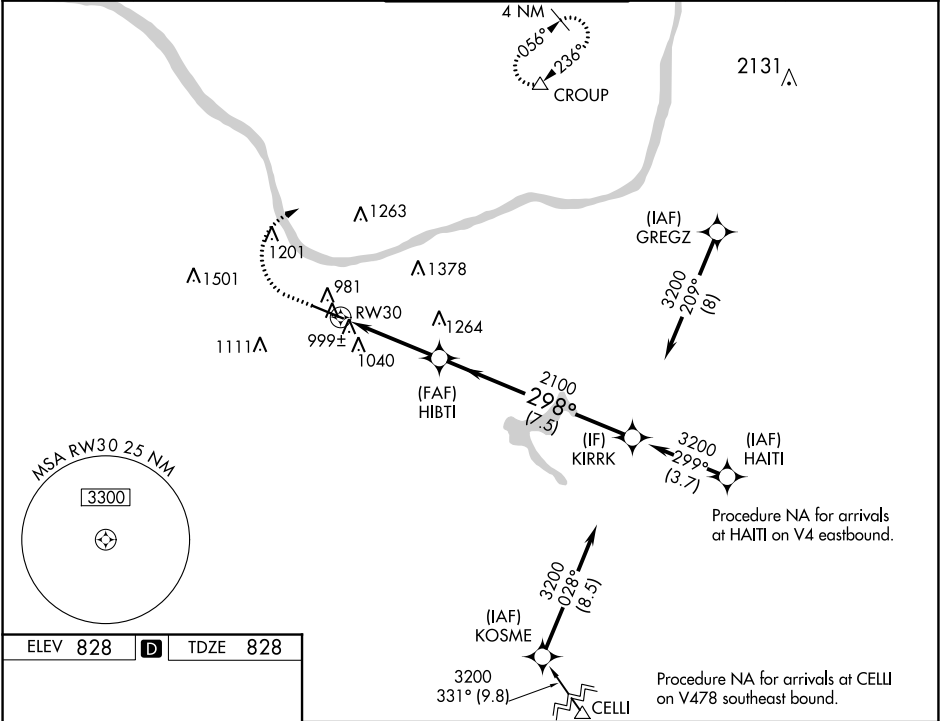
RNP APCH

ASR

For uncompensated Baro-VNAV systems, LNAV/VNAV NA below -18°C or above 54°C.

MISSED APPROACH: Climb to 1700 then climbing right turn to 3000 direct CROUP and hold.

ATIS <b>125.2</b>	HUNTINGTON APP CON <b>119.75 270.1</b>	HUNTINGTON TOWER <b>118.5 270.1</b>	GND CON <b>121.9</b>	CLNC DEL <b>118.05</b>
----------------------	---	--	-------------------------	---------------------------



1700

3000

CROUP

HIBTI

2100

KIRRK

\*LNAV only.

\*1.2 NM to RW30

RW30

1.2

2.6 NM

7.5 NM

GP 3.00°

TCH 50

CATEGORY	A	B	C	D
LPV DA		1028-3/4	200 (200-3/4)	
LNAV/VNAV DA		1180-1	352 (400-1)	
LNAV MDA	1260-1	432 (500-1)	1260-1 1/4	432 (500-1 1/4)
CIRCLING	1320-1 492 (500-1)	1380-1 552 (600-1)	1520-2 692 (700-2)	1820-3 992 (1000-3)