

WAAS
CH **45699**
W12A

APP CRS
118°

Rwy Idg
TDZE **828**
Apt Elev **828**

RNAV (GPS) RWY 12

TRI-STATE/MILTON J FERGUSON FIELD (HTS)

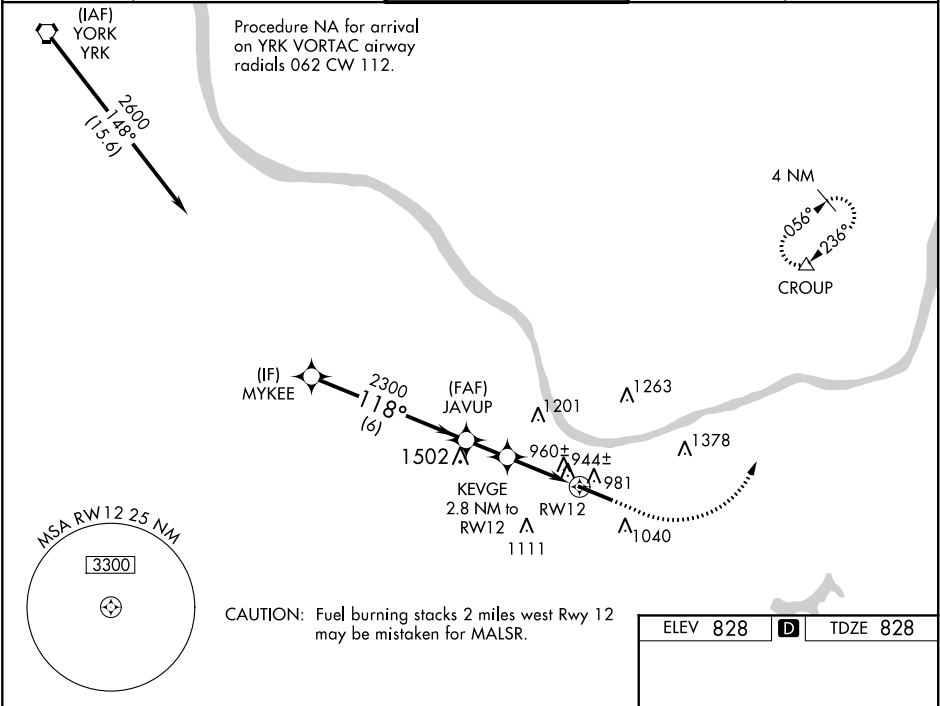
RNP APCH.

ASR
For inoperative ALS, increase LNAV/VNAV all Cats visibility to RVR 4500, LNAV Cat A/B to RVR 5500, Cat C/D to RVR 6000. For uncompensated Baro-VNAV systems, LNAV/VNAV NA below 16°C or above 38°C. Rwy 12 helicopter visibility reduction below ¾ SM NA.

MALSR

MISSED APPROACH:
Climb to 1700 then climbing left turn to 3000 direct CROUP and hold.

ATIS 125.2	HUNTINGTON APP CON 119.75 270.1	HUNTINGTON TOWER 118.5 270.1	GND CON 121.9	CLNC DEL 118.05
----------------------	---	--	-------------------------	---------------------------



MYKEE
2600
GP 3.00°
TCH 56

JAVUP
2300
*1760

KEVGE
2.8 NM to RW12
*1.1 NM to RW12

1700
3000
CROUP

*LNAV only.

118° to RW12

CATEGORY	A	B	C	D
LPV DA		1028/40	200 (200-¾)	
LNAV/VNAV DA		1126/40	298 (300-¾)	
LNAV MDA		1220/40	392 (400-¾)	
CIRCLING	1340-1	512 (600-1)	1340-1½ 512 (600-1½)	1420-2 592 (600-2)

REIL Rwy 30
HIRL Rwy 12-30