

WAAS CH 78117 W26A	APP CRS 268°	Rwy Idg 5001 TDZE 36 Apt Elev 36
--	------------------------	---

RNAV (GPS) RWY 26

PHILADELPHIA INTL (PHL)

RNP APCH.

T For uncompensated Baro-VNAV systems, LNAV/VNAV NA below -12°C or above 54°C.
 For Inop ALS, increase LPV all Cats visibility ½ SM, increase LNAV Cats A and B to RVR 5500. Simultaneous approach authorized. LNAV procedure NA during simultaneous operations. Use of FD or AP providing RNAV track guidance required during simultaneous operations. Rwy 26 helicopter visibility reduction below RVR 4000 NA.

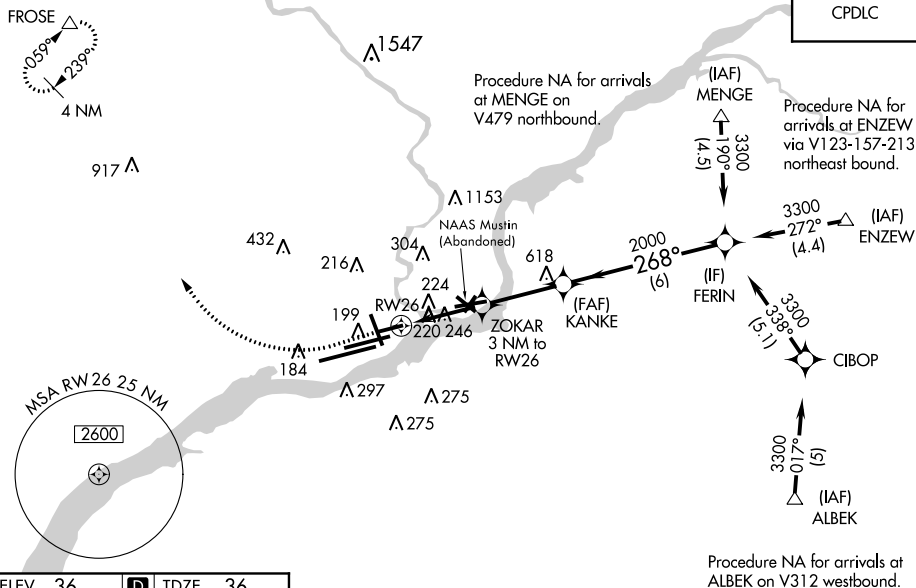
MALSR



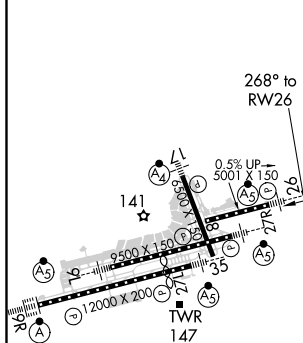
MISSED APPROACH:
Climb to 800 then
climbing right turn
to 3000 direct
FROSE and hold.

D-ATIS	PHILADELPHIA APP CON	PHILADELPHIA TOWER				GND CON	CLNC DEL
ARR 133.4		118.5	327.05	(Rwys 9L/27R, 8/26 and 17/35)			
DEP 135.925	124.35 319.15	135.1	327.05	(Rwy 9R/27L)		121.9 348.6	118.85 348.6

CPDI C



ELEV 36	D	TDZE 36
---------	----------	---------



TDZ/CL Rwy 9R
HIRL all Rwys
REIL Rwys 9L and 35

1055

* LNAV only.

ZOKAR 3 NM to RW26

* 1.2 NM to RW26

RW26

KANKE 2000

268°

3300

1040*

2000

GP 3.00° TCH 50

CATEGORY	A	B	C	D
LPV DA	513/60		477 (500-1¼)	
LNAV/VNAV DA	573-1½		537 (600-1½)	
LNAV MDA	540/40 504 (600-¾)		540/55 504 (600-1)	
CIRCLING	540-1 504 (600-1)	600-1 564 (600-1)	620-1½ 584 (600-1½)	720-2¼ 684 (700-2¼)