

LOC/DME I-MYY 108.75 Chan 24 (Y)	APP CRS 171°	Rwy Idg 6500 TDZE 10 Apt Elev 36
--	------------------------	---

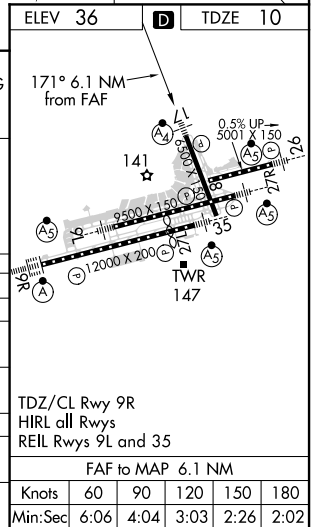
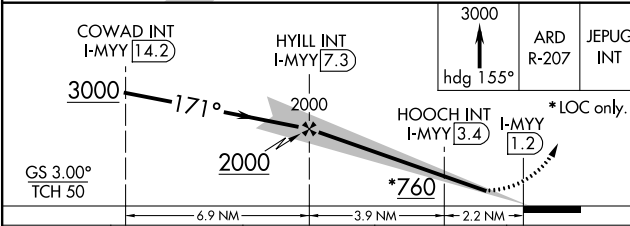
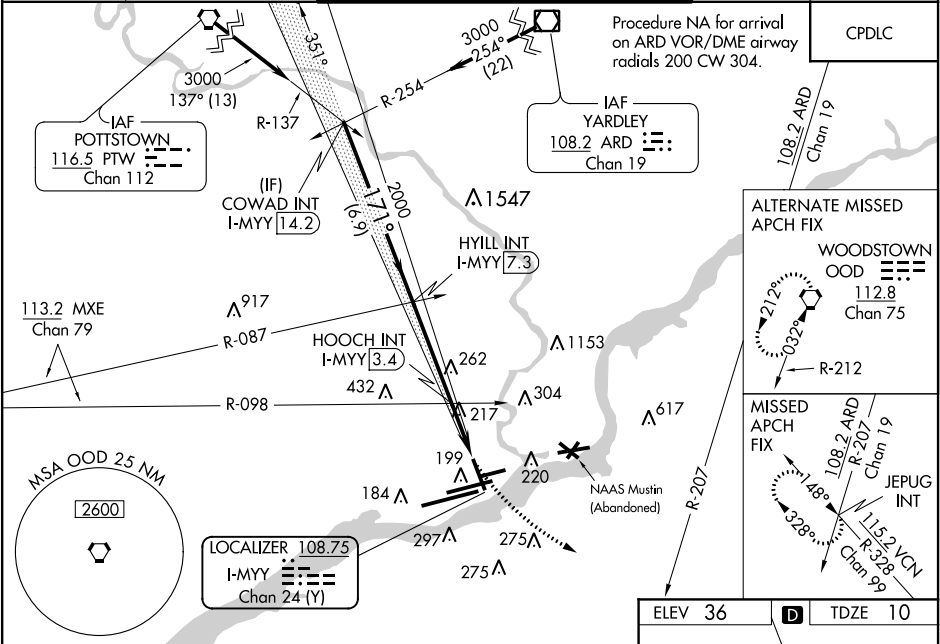
ILS Z or LOC RWY 17
PHILADELPHIA INTL (PHL)

⚠ Inop table does not apply to S-ILS 17 all Cats and S-LOC 17 Cat A. For inop ALS, increase S-LOC 17 Cat C visibility to 2 SM. HOOCH fix minimums: inop table does not apply to Cats A/B. Rwy 17 helicopter visibility reduction below RVR 5000 NA.

MALSF

MISSED APPROACH: Climb to 3000 on heading 155° and ARD VOR/DME R-207 to JEPUG INT and hold.

D-ATIS ARR 133.4 DEP 135.925	PHILADELPHIA APP CON 124.35 319.15	PHILADELPHIA TOWER 118.5 327.05 (Rwys 9L/27R, 8/26 and 17/35) 135.1 327.05 (Rwy 9R/27L)	GND CON 121.9 348.6	CLNC DEL 118.85 348.6
--	--	---	-------------------------------	---------------------------------



CATEGORY	A	B	C	D
S-ILS 17	260/50	250 (300-1)		
S-LOC 17	760/50 750 (800-1)	760/55 750 (800-1)	760-1 7/8 750 (800-1 7/8)	760-2 1/4 750 (800-2 1/4)
CIRCLING	760-1 724 (800-1)	760-1 1/4 724 (800-1 1/4)	760-2 724 (800-2)	760-2 1/4 724 (800-2 1/4)
HOOCH FIX MINIMUMS				
S-LOC 17	480/50	470 (500-1)	480/60	470 (500-1 1/4)
CIRCLING	540-1 504 (600-1)	640-1 604 (700-1)	640-1 3/4 604 (700-1 3/4)	640-2 604 (700-2)

NE-4, 31 DEC 2020 to 28 JAN 2021

NE-4, 31 DEC 2020 to 28 JAN 2021