

WAAS	APP CRS	Rwy Idg	8070
CH 86313	128°	TDZE	308
W13A		Apt Elev	310

RNAV (GPS) RWY 13

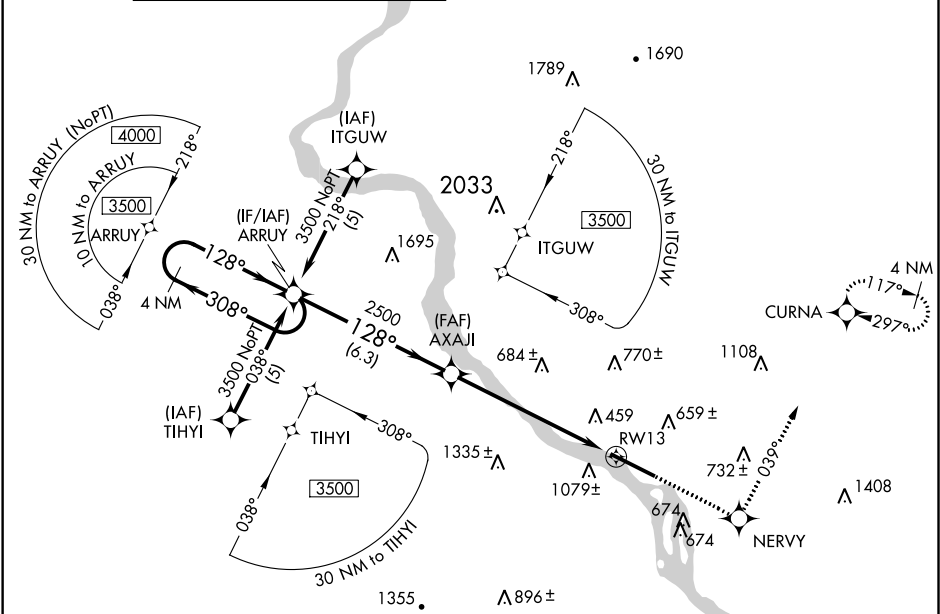
HARRISBURG INTL (MDT)

Circling NA south of Rwy 13-31. For uncompensated Baro-VNAV systems, LNAV/VNAV NA below -1.5°C (5°F) or above 48°C (118°F). DME/DME RNP-0.3 NA. Inop table does not apply to LNAV/VNAV all Cats.

ALSIF-2

MISSED APPROACH: Climb to 3500 direct NERVY and via track 039° to CURNA and hold, continue climb-in-hold to 3500.

ATIS	HARRISBURG APP CON		HARRISBURG INTL TOWER		GND CON	
118.8	(080°-179°)	126.45	281.525	124.8	269.35	121.7 348.6
	(180°-309°)	124.1	273.525			
	(310°-079°)	118.25	269.45			



ELEV 310

TDZE 308

4 NM Holding Pattern

ARRUY

3500

308°

128°

128°

AXAJI

2500

GP 3.00°

TCH 54

6.3 NM

4.1 NM

2.5 NM

RW13

*2.5 NM to RW13

*LNAV only.

3500

NERVY

tr 039°

CURNA

128° to RW13

TWR 450

10001 X 200

CATEGORY	A	B	C	D
LPV DA		558/24	250 (300-½)	
LNAV/VNAV DA		1572-5	1264 (1300-5)	
LNAV MDA	1180/24 872 (900-½)	1180/40 872 (900-¾)	1180-2 872 (900-2)	1180-2¼ 872 (900-2¼)
CIRCLING	1180-1 870 (900-1)	1180-1¼ 870 (900-1¼)	1180-2½ 870 (900-2½)	1180-2¾ 870 (900-2¾)

TDZ/CL Rwy 13

REIL Rwy 31

HIRL Rwy 13-31

NE-4, 31 DEC 2020 to 28 JAN 2021

NE-4, 31 DEC 2020 to 28 JAN 2021