

LOC FMDT 110.9	APP CRS 128°	Rwy Idg 8070
	TDZE 308	
	Apt Elev 310	

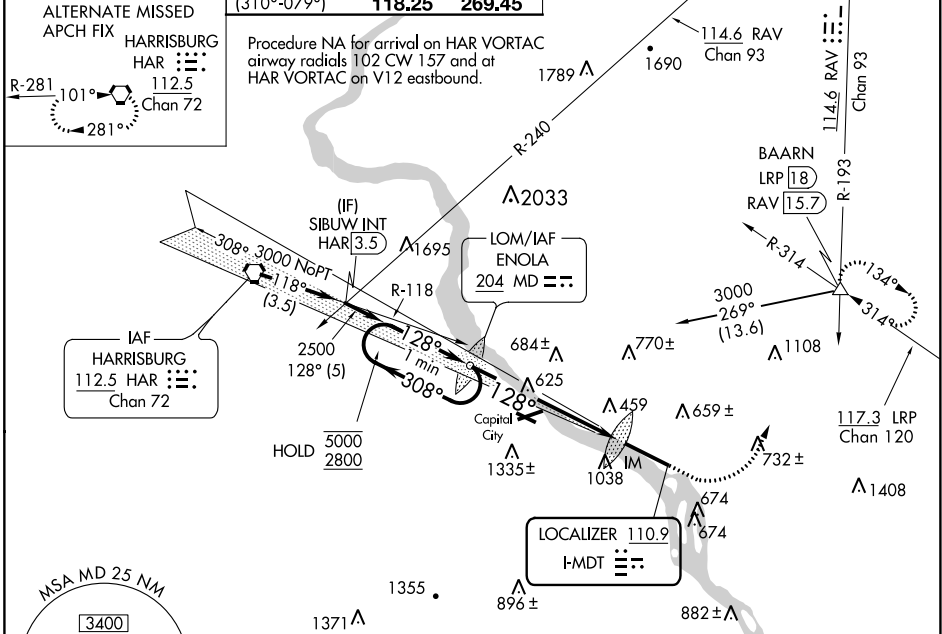
ILS or LOC RWY 13
HARRISBURG INTL (MDT)

17°C Circling NA south of Rwy 13-31.

ALSF-2

MISSED APPROACH: Climb to 900 then climbing left turn to 3000 on heading 060° and RAV VORTAC R-193 to BAARN INT/LRP 18 DME and hold.

ATIS 118.8	HARRISBURG APP CON (080°-179°) 126.45 281.525 (180°-309°) 124.1 273.525 (310°-079°) 118.25 269.45	HARRISBURG INTL TOWER 124.8 269.35	GND CON 121.7 348.6
----------------------	---	--	-------------------------------



One Minute Holding Pattern

ENOLA LOM

900 3000

RAV R-193

BAARN

VGSI and ILS glidepath not coincident (VGSI Angle 3.00/TCH 75).

CATEGORY	A	B	C	D
S-ILS 13	508/18 200 (200-½)			
S-LOC 13	900/24	592 (600-½)	900-1¼	592 (600-1¼)
CIRCLING	900-1	590 (600-1)	940-1¾ 630 (700-1¾)	1000-2 690 (700-2)

ELEV 310 TDZE 308

TDZ/CL Rwy 13	REIL Rwy 31	HIRL Rwy 13-31
FAF to MAP 6.4 NM		
Knots	60	90 120 150 180
Min:Sec	6:24	4:16 3:12 2:34 2:08

NE-4, 31 DEC 2020 to 28 JAN 2021

NE-4, 31 DEC 2020 to 28 JAN 2021