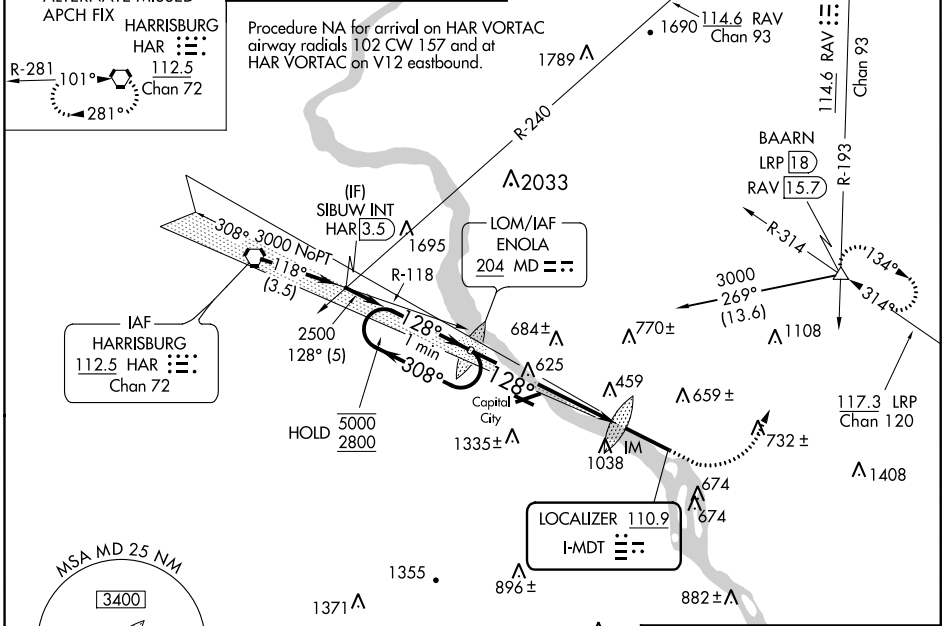


LOC I-MDT <b>110.9</b>	APP CRS <b>128°</b>	Rwy Idg TDZE Apt Elev <b>8070</b> <b>308</b> <b>310</b>
---------------------------	------------------------	--

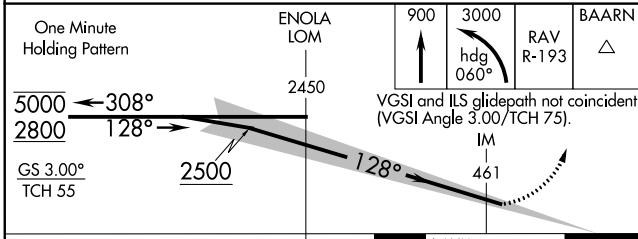
ILS RWY 13 (CAT II & III)  
HARRISBURG INTL (MDT)

-17°C	ALSF-2 	MISSED APPROACH: Climb to 900 then climbing left turn to 3000 on heading 060° and RAV VORTAC R-193 to BAARN INT/LRP 18 DME and hold.
-------	------------	--

ATIS <b>118.8</b>	HARRISBURG APP CON (080°-179°) <b>126.45 281.525</b> (180°-309°) <b>124.1 273.525</b> (310°-079°) <b>118.25 269.45</b>	HARRISBURG INTL TOWER <b>124.8 269.35</b>	GND CON <b>121.7 348.6</b>
----------------------	---	--	-------------------------------

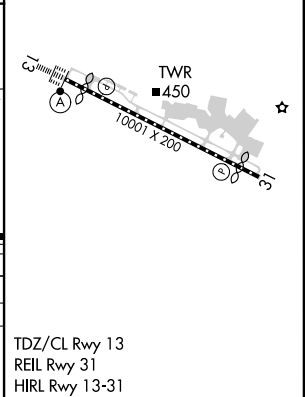


ELEV 310	TDZE 308
----------	----------



CATEGORY	A	B	C	D
S-ILS 13	CAT II	RA 101/12	100 DA 408	
S-ILS 13	CAT III	RVR 06		

CATEGORY II & III ILS - SPECIAL AIRCREW & AIRCRAFT CERTIFICATION REQUIRED



NE-4, 31 DEC 2020 to 28 JAN 2021

NE-4, 31 DEC 2020 to 28 JAN 2021