

WAAS CH 82532 W13A	APP CRS 135°	Rwy Idg TDZE 386 Apt Elev 394
--	------------------------	---

RNAV (GPS) RWY 13

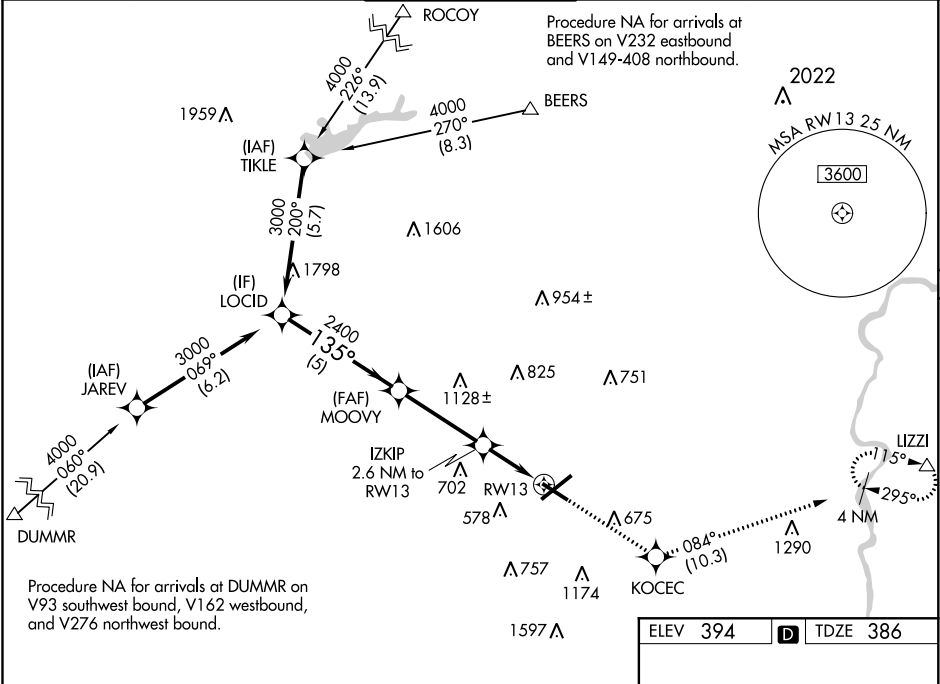
LEHIGH VALLEY INTL (ABE)

For uncompensated Baro-VNAV systems, LNAV/VNAV NA below -16°C (4°F) or above 54°C (130°F). DME/DME RNP-0.3 NA.
For inoperative MALSR, increase LNAV Cat C/D visibility to 1½ mile.

MALSR

MISSED APPROACH: Climb to 3000 direct KOCEC and on track 084° to LIZZI and hold.

ATIS 126.975	ALLENTOWN APP CON 119.65 124.45 351.8	ALLENTOWN TOWER 120.5 257.95	GND CON 121.9 257.95	CLNC DEL 124.05 257.95
------------------------	---	--	--------------------------------	----------------------------------



					3000	KOCEC	tr 084°	LIZZI	
					IZKIP	*LNAV only			
					2.6 NM to RW13	*1.1 NM to RW13			
					RW13				
					*1260				
					5 NM	3.6 NM			
					1.5 NM	1.1 NM			
CATEGORY	A	B	C	D					
LPV DA	586-½		200 (200-½)						
LNAV/VNAV DA	700-½		314 (400-½)						
LNAV MDA	800-½ 414 (500-½)		800-¾		414 (500-¾)				
CIRCLING	900-1 506 (600-1)		1180-2¼ 786 (800-2¼)		1600-3 1206 (1300-3)				

