

RNAV (GPS) RWY 28
TAPPAHANNOCK-ESSEX COUNTY (XSA)

MISSED APPROACH: Climb to 600 then climbing left turn to 2000 direct SVILL and hold.

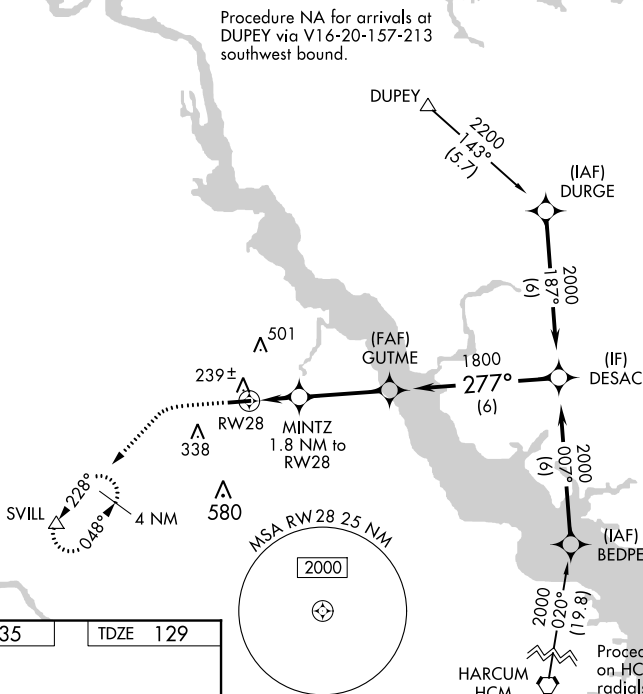
UN|COM
122.8 (CTAF) **L**

Diagram of a ramp with dimensions and angles:

- Length: 4300 X 75
- Angle: 277° to RW28
- Angle: 28°
- Height: 10

600
↑

2000
↘

SVILL
△

* RNAV only.

MINTZ
1.8 NM to RW28

1800

277°

2000

GP 3.00°
TCH 40

1 NM

0.8 NM

3.3 NM

6 NM

740*

1800

CATEGORY	A	B	C	D
LPV DA	379-1	250 (300-1)	NA	
RNAV/ VNAV	402-1	273 (300-1)	NA	
RNAV MDA	500-1	371 (400-1)	NA	
CIRCLING	580-1 445 (500-1)	640-1 505 (600-1)	820-2 685 (700-2)	NA

REIL Rwy 10 and 28
MIRL Rwy 10-28 **L**