

| | | | |
|------------|---------|----------|------|
| VORTAC BRV | APP CRS | Rwy Idg | 5000 |
| 114.5 | 314° | TDZE | 196 |
| Chan 92 | | Apt Elev | 212 |


VOR RWY 33

STAFFORD RGNL (RMN)

▼

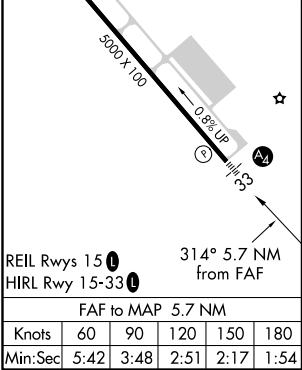
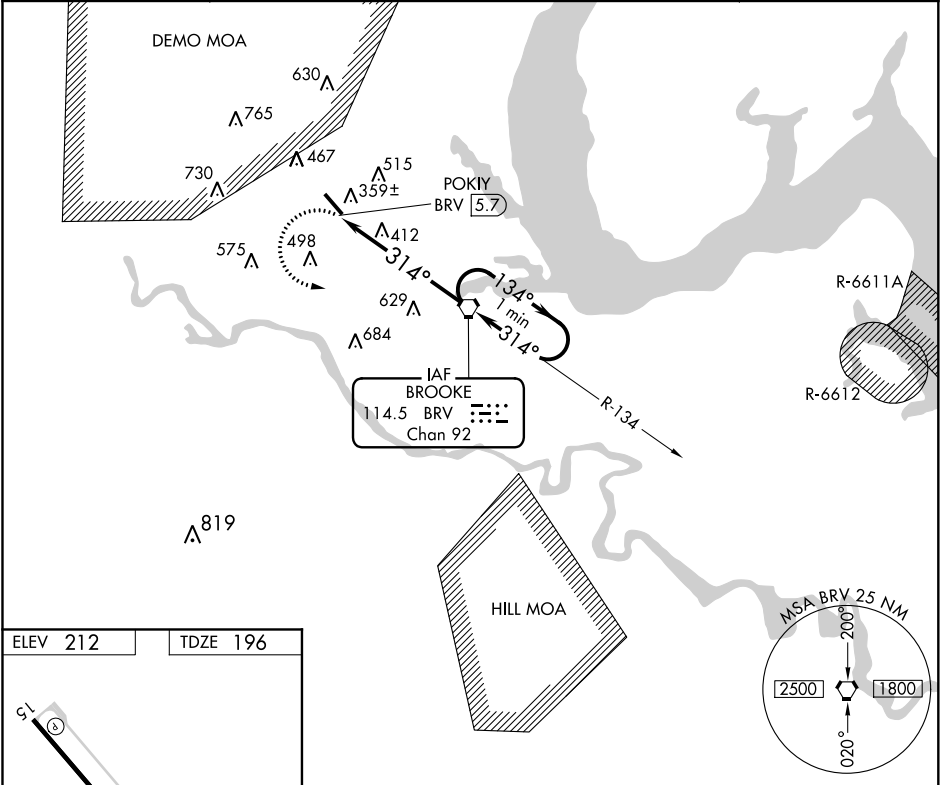
If local altimeter setting not received, use Shannon, Fredericksburg, VA altimeter setting and increase all MDAs 40 feet. VDP NA with Shannon, Fredericksburg, VA altimeter setting. Inoperative table does not apply to Cat C.

MALS



MISSED APPROACH: Climbing left turn to 2000 direct BRV VORTAC and hold.

| | | | |
|---------|------------------|---------|------------------|
| AWOS-3 | POTOMAC APP CON★ | GCO | UNICOM |
| 126.325 | 127.05 290.375 | 135.075 | 122.725 (CTAF) 0 |



| | | | | | | | | |
|----------|-------|--|-------------------|--|---------------------|--|---------------------|--|
| CATEGORY | A | | B | | C | | D | |
| | S-33 | | 740-¾ 544 (600-¾) | | 740-1½ 544 (600-1½) | | 740-1¾ 544 (600-1¾) | |
| CIRCLING | 740-1 | | 528 (600-1) | | 840-1¾ 628 (700-1¾) | | 860-2 648 (700-2) | |