

WAAS CH 53524 W25A	APP CRS 252°	Rwy Idg 4299 TDZE 2653 Apt Elev 2653
--	------------------------	---

RNAV (GPS) RWY 25

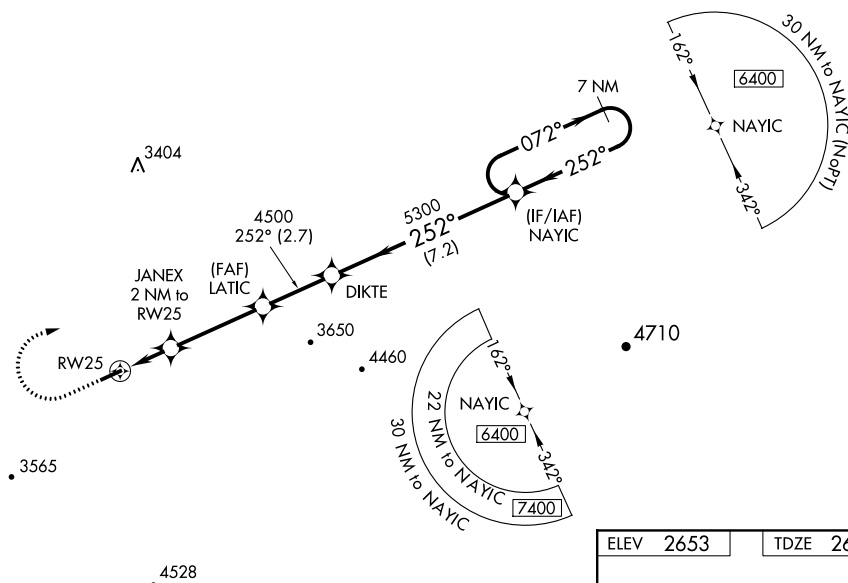
TAZEWELL COUNTY (JFZ)

TAZEWELL COUNTY (JFZ)

T Baro-VNAV NA when using Wise altimeter setting. For uncompensated Baro-VNAV systems, LNAV/VNAV NA below -20°C (-4°F) or above 54°C (130°F). DME/DME RNP-0.3 NA. Visibility reduction by helicopters NA. When local altimeter setting not received, use Wise altimeter setting and increase all DA 86 feet and all MDA 100 feet, increase LPV and LNAV/VNAV all Cats and Circling Cat C visibility ¾ mile, increase LNAV Cat C visibility ¼ mile. When VGSI inop, Straight-in/Circling Rwy 25 procedure NA at night. When VGSI inop, Circling Rwy 7 NA at night. Circling NA for Cat C south of Rwy 7-25.

MISSED APPROACH:
Climb to 3800 then
climbing right turn to
6400 direct NAYIC
and hold, continue
climb-in-hold to 6400.

AWOS-3 118.075	ATLANTA CENTER 127.85 269.3	GCO 135.075	UNICOM 123.05 (CTAF) 0
--------------------------	---------------------------------------	-----------------------	----------------------------------



3800
6400
NAYIC

VGSJ and RNAV glidepath not coincident
(VGSJ Angle 4.00/TCH 54).

7 NM
Holding Pattern

* LNAV only.

DIKTE

NAYIC

072° → 6400
← 252°

JANEX
2 NM to RW25

LATIC
4500


5300

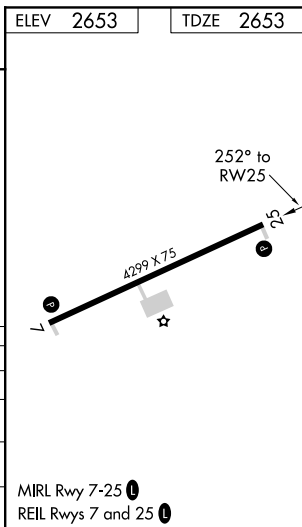
3340*

4500

GP 3.00°
TCH 54

2 NM 3.6 NM 2.7 NM 2.2 NM

CATEGORY	A	B	C	D
LPV DA	3201-1 $\frac{7}{8}$	548 (600-1 $\frac{7}{8}$)		NA
RNAV/ VNAV DA	3210-1 $\frac{7}{8}$	557 (600-1 $\frac{7}{8}$)		NA
RNAV MDA	3200-1	547 (600-1)	3200-1 $\frac{5}{8}$ 547 (600-1 $\frac{5}{8}$)	NA
 CIRCLING	3240-1	587 (600-1)	3240-1 $\frac{5}{8}$ 587 (600-1 $\frac{5}{8}$)	NA



RNAV (GPS) RWY 25