

WAAS CH 48843 W09A	APP CRS 092°	Rwy Idg TDZE 489 Apt Elev 494
--	------------------------	---

RNAV (GPS) RWY 9

LOUISA COUNTY/FREEMAN FIELD (LKU)

RNP APCH.

▼

▲

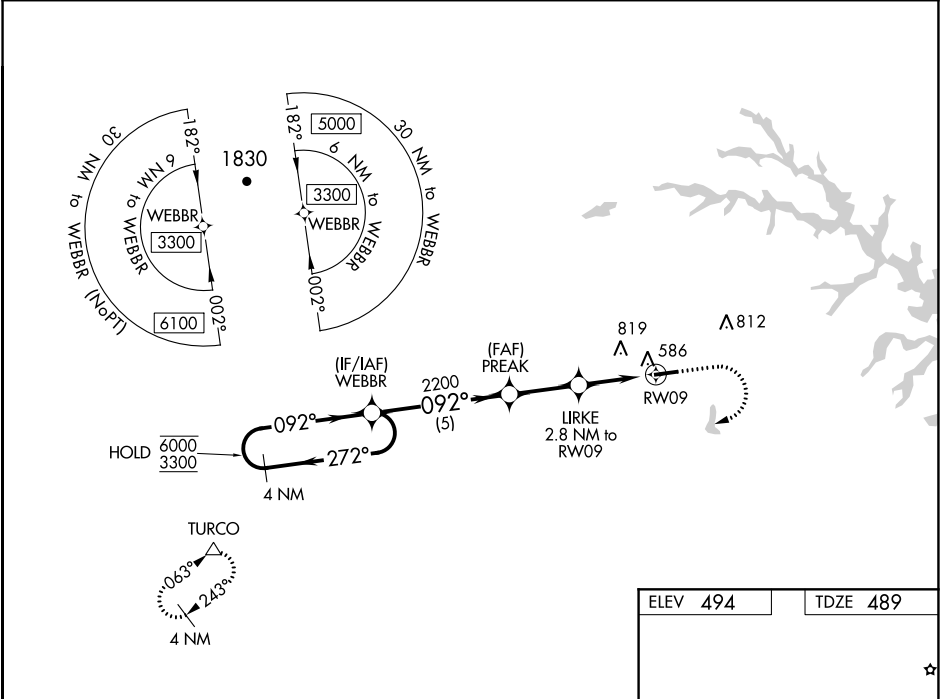
Circling NA north of Rwy 9-27. Rwy 9 helicopter visibility reduction below ¾ SM NA.
For uncompensated Baro-VNAV systems, LNAV/VNAV NA below -1.5°C or above 54° C.
When local altimeter setting not received, use Orange altimeter setting and increase LPV DA to 775 feet, LNAV/VNAV DA to 784 feet and MDA 40 feet; increase LPV and LNAV/VNAV visibility ½ SM. Baro-VNAV and VDP NA when using Orange altimeter setting.

MISSED APPROACH: Climb to 1000 then climbing right turn to 3300 direct TURCO and hold.

AWOS-3
119.475

POTOMAC APP CON
132.85 323.125

UNICOM
122.975 (CTAF) 0



4 NM Holding Pattern				
GP 3.00° TCH 40				
5 NM 2.5 NM 1.8 NM 1 NM				
CATEGORY	A	B	C	D
LPV DA	739-¾	250 (300-¾)	NA	
LNAV/VNAV DA	748-¾	259 (300-¾)	NA	
LNAV MDA	840-1	351 (400-1)	NA	
CIRCLING	900-1	960-1	NA	
	406 (500-1)	466 (500-1)		

ELEV 494 TDZE 489

The diagram shows the runway (RWY 09) and the approach path. The runway is 4300 X 100 feet. The approach path is 092° to RWY 09. The diagram also shows the TURCO point, which is 4 NM from the runway and 063° from the approach path. The diagram includes various altitudes and distances, such as 1000, 3300, 586, and 586 feet, and distances of 5 NM, 2.5 NM, 1.8 NM, and 1 NM.

REIL Rwy 9 and 27 0
MIRL Rwy 9-27 0