

APP CRS	Rwy Idg	3750
254°	TDZE	69
	Apt Elev	70

RNAV (GPS) RWY 25

SUFFOLK EXECUTIVE (SFQ)

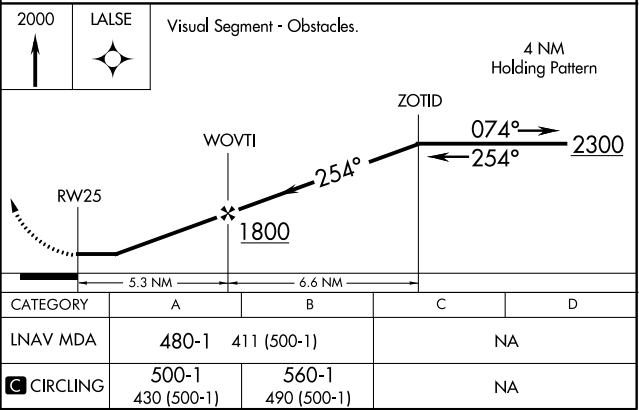
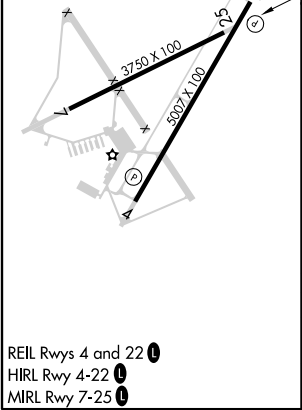
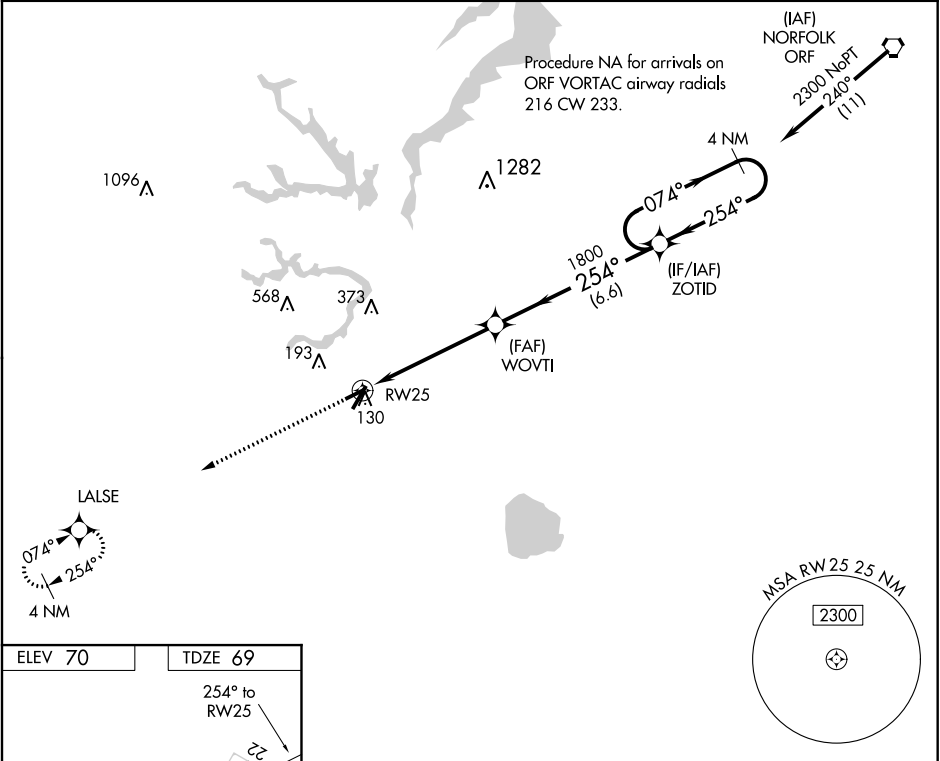
▼

▲

DME/DME RNP-0.3 NA. Helicopter visibility reduction below 1 SM NA.  
When local altimeter setting not received, use Norfolk Intl altimeter setting and increase all MDA 60 feet.

MISSED APPROACH: Climb to 2000 direct LALSE and hold.

AWOS-3 119.375	NORFOLK APP CON 127.9 269.425	UNICOM 122.7 (CTAF) 0
-------------------	----------------------------------	--------------------------



NE-3, 31 DEC 2020 to 28 JAN 2021

NE-3, 31 DEC 2020 to 28 JAN 2021