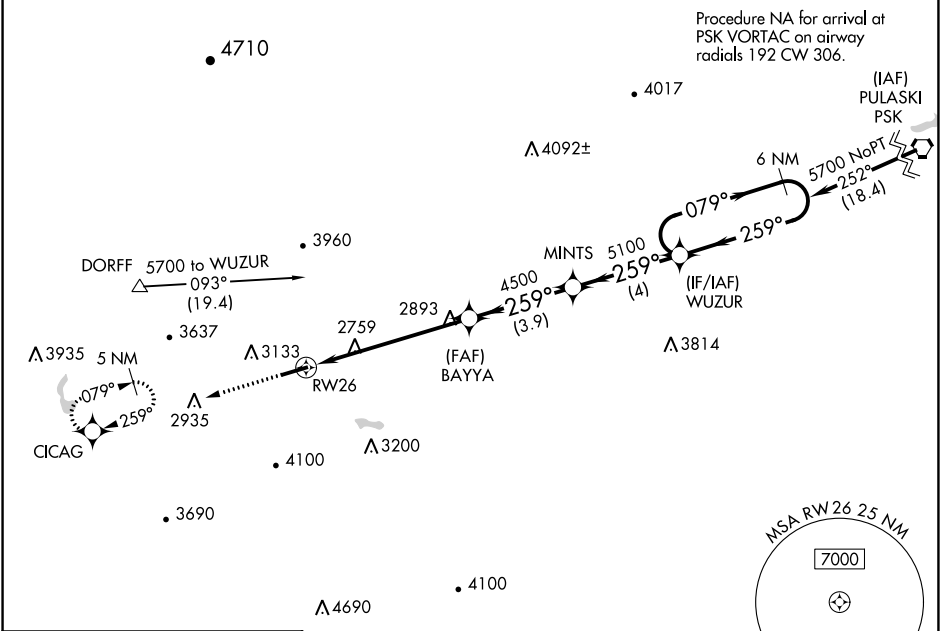


WAAS CH 72802 W26A	APP CRS 259°	Rwy Idg TDZE Apt Elev 5252 2519 2558
--	------------------------	--

RNAV (GPS) RWY 26
MOUNTAIN EMPIRE (MKJ)

<p>V For uncompensated Baro-VNAV systems, LNAV/VNAV NA below -20°C (-4°F) or above 54°C (130°F). Circling NA north of Rwy 8-26. Rwy 26 helicopter visibility reduction below ¾ SM NA. DME/DME RNP-0.3 NA.</p>	<p>MISSED APPROACH: Climb to 6200 direct CICAG and hold, continue climb-in-hold to 6200.</p>
--	---

AWOS-3 123.875	ATLANTA CENTER 127.85 269.3	UNICOM 122.7 (CTAF) 0
--------------------------	---------------------------------------	---------------------------------



ELEV 2558	TDZE 2519
-----------	-----------

6200 CICAG

VGSI and RNAV glidepath not coincident (VGSI Angle 3.75/TCH 47).

6 NM Holding Pattern

WUZUR

079° 259° 5700

GP 3.00° TCH 51

*LNAV only.

*1.5 NM to RW26

BAYYA 4500

MINTS 5100

259° 259°

1.5 NM 4.6 NM 3.9 NM 4 NM

5252 X 75

1.1% UP

Δ 2598

259° to RW26

CATEGORY	A	B	C	D
LPV DA	3096-2	577 (600-2)		NA
LNAV/VNAV DA	3159-2½	640 (700-2½)		NA
LNAV MDA	3140-1	621 (600-1)	3140-1¾ 621 (600-1¾)	NA
C CIRCLING	3260-1	702 (800-1)	4440-3 1882 (1900-3)	NA

NE-3, 31 DEC 2020 to 28 JAN 2021

NE-3, 31 DEC 2020 to 28 JAN 2021