

| | | |
|---|------------------------|--|
| LOC/DME I-OWN 110.7 Chan 44 | APP CRS 242° | Rwy Idg TDZE Apt Elev 5280 2684 2684 |
|---|------------------------|--|

LOC/DME RWY 24

LONESOME PINE (LNP)

▼

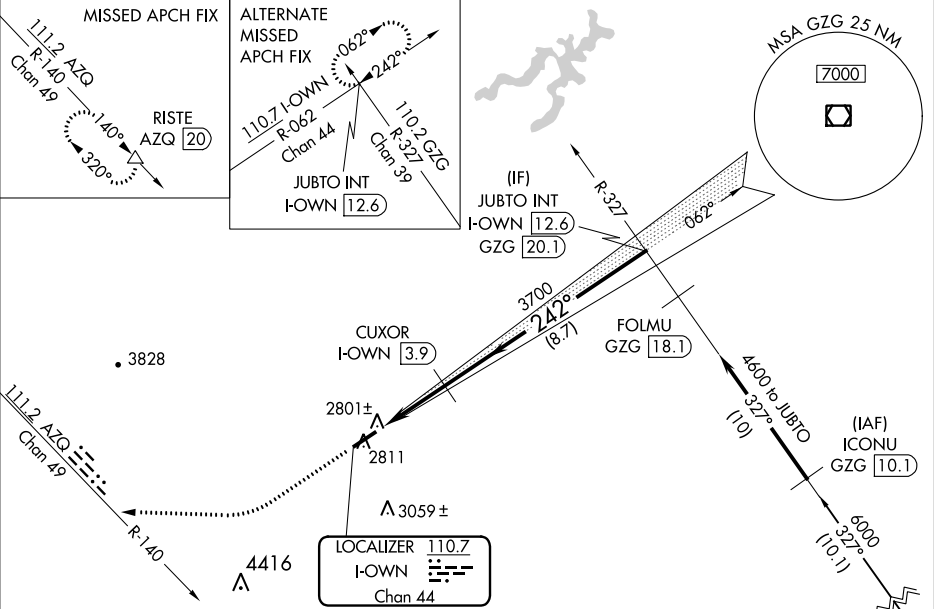
▲

Visibility reduction by helicopters NA. When local altimeter setting not received, use Virginia Highlands altimeter setting and increase all MDA 160 feet and increase S-LOC and Circling Cats C/D visibility ½ mile.

ODALS

MISSED APPROACH: Climb to 3300 then climbing right turn to 6400 via heading 272° and AZQ VOR/DME R-140 to RISTE/AZQ 20 DME and hold.

| | | |
|------------------------|---|--|
| AWOS-3 118.6 | INDIANAPOLIS CENTER 126.575 253.5 | UNICOM 123.0 (CTAF) 0 |
|------------------------|---|--|



| | |
|-----------|-----------|
| ELEV 2684 | TDZE 2684 |
|-----------|-----------|

242° 3 NM from FAF

5280 x 100

0.3% UP

3300

6400

AZQ R-140

RISTE

VGSI and descent angles not coincident (VGSI Angle 3.00/TCH 36).

Use I-OWN DME when on the localizer course.

CUXOR I-OWN 3.9

JUBTO INT I-OWN 12.6

4600

Procedure Turn NA

I-OWN 0.9

3700

242°

3.04° TCH 44

3 NM

8.7 NM

| CATEGORY | A | B | C | D |
|----------|--------|-------------|-------------------------|-------------------------|
| S-24 | 3060-1 | 376 (400-1) | | 3060-1¼ 376 (400-1¼) |
| CIRCLING | 3140-1 | 456 (500-1) | 3240-1½ 556 (600-1½) | 3360-2¼ 676 (700-2¼) |