

WAAS CH 49017 W03A	APP CRS 029°	Rwy Idg 4400 TDZE 410 Apt Elev 416
----------------------------------------	------------------------	---------------------------------------------------------------

RNAV (GPS) RWY 3

FARMVILLE RGNL (FVX)

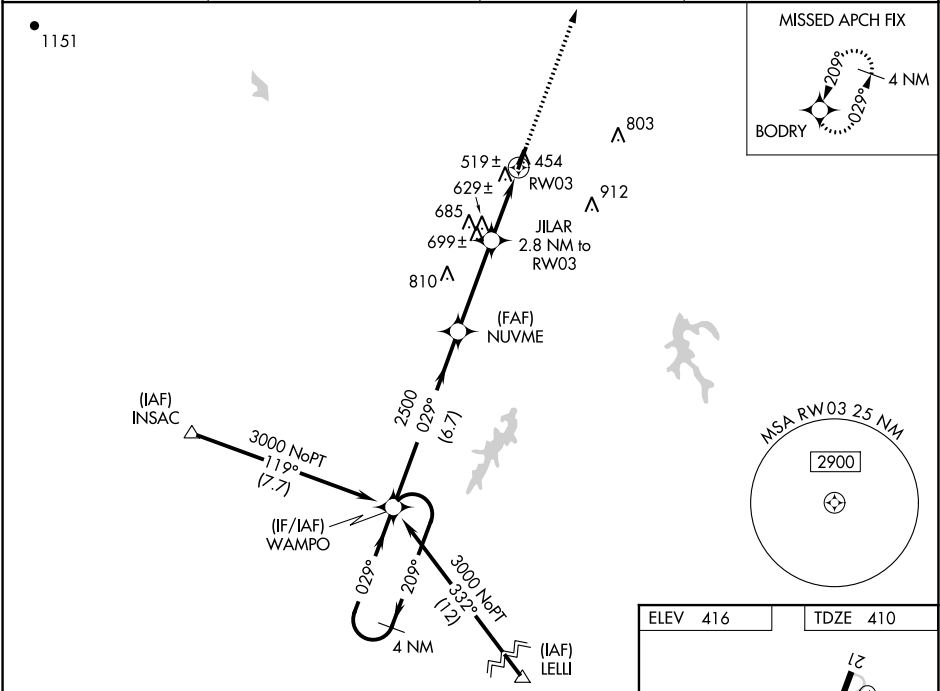
▼

⚠

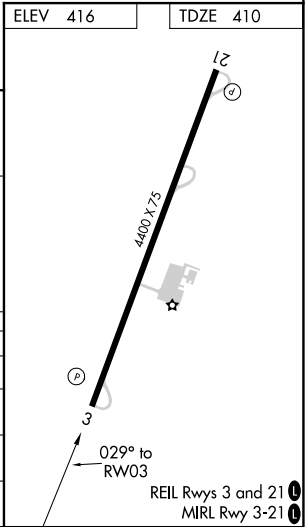
Baro-VNAV NA when using Lynchburg altimeter setting. For uncompensated Baro-VNAV systems, LNAV/VNAV NA below -15°C (5°F) or above 54°C (130°F). Straight-in/Circling Rwy 3 procedure NA at night. DME/DME RNP-0.3 NA. When local altimeter setting not received, use Lynchburg altimeter setting and increase all DA 158 feet and all MDA 160 feet. Increase LPV and LNAV/VNAV visibility ½ mile all Cats; LNAV Cat C visibility ¾ mile and Circling Cat C visibility ¾ mile. Helicopter visibility reduction below 1 SM NA.

MISSED APPROACH:
Climb to 3000 direct
BODRY and hold.

AWOS-3 132.725	ROANOKE APP CON 135.0 254.325	GCO 135.075	UNICOM 122.8 (CTAF) 0
--------------------------	-----------------------------------------	-----------------------	---------------------------------



4 NM Holding Pattern		VGSI and RNAV glidepath not coincident (VGSI Angle 3.00/TCH 44).		3000	BODRY
WAMPO		NUVME		2500	JILAR 2.8 NM to RW03
3000 ← 209°		→ 029°		*LNAV only.	
GP 3.00° TCH 56		2500		RW03	
		*1360			
		6.7 NM		3.5 NM	
				2.8 NM	
CATEGORY	A	B	C	D	
LPV DA	720-1		310 (400-1)		NA
LNAV/VNAV DA	812-1 3/8		402 (400-1 3/8)		NA
LNAV MDA	880-1		470 (500-1)		NA
CIRCLING	900-1		484 (500-1)		NA



NE-3, 31 DEC 2020 to 28 JAN 2021

NE-3, 31 DEC 2020 to 28 JAN 2021