

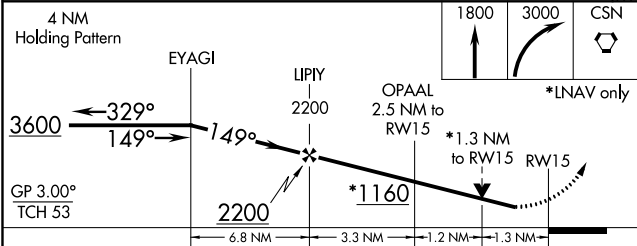
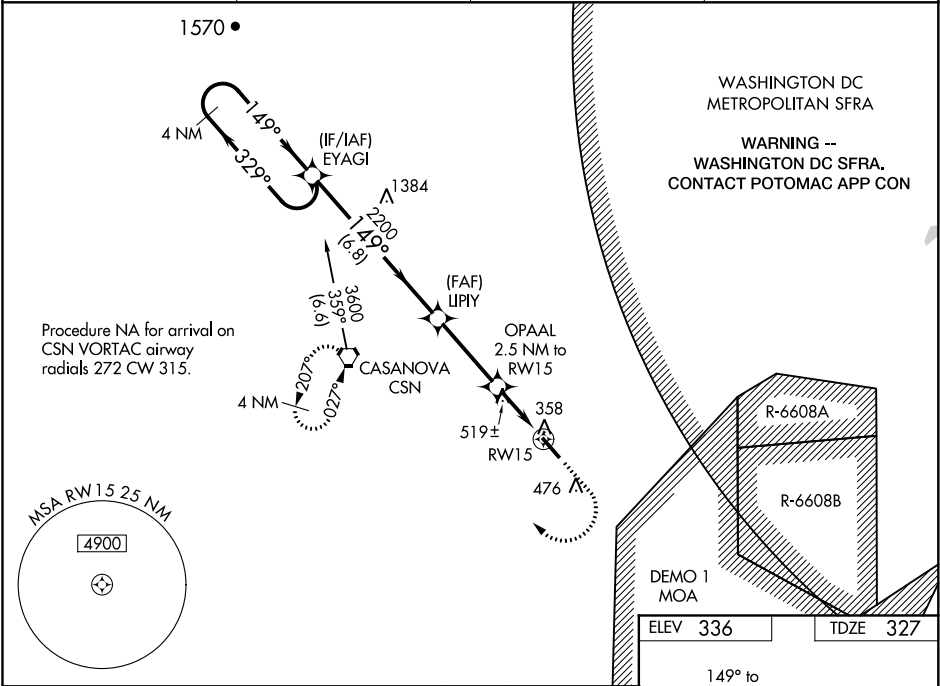
WAAS CH <b>81926</b> <b>W15A</b>	APP CRS <b>149°</b>	Rwy ldg TDZE Apt Elev	<b>5000</b> <b>327</b> <b>336</b>
--	------------------------	-----------------------------	---

RNAV (GPS) RWY 15  
WARRENTON-FAUQUIER (HWY)

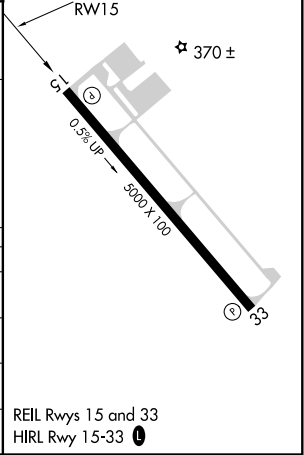
**⚠** Baro-VNAV NA when using Culpoper altimeter setting. For uncompensated Baro-VNAV systems, LNAV/VNAV NA below -11°C (13°F) or above 41°C (105°F). DME/DME RNP-0.3 NA. Helicopter visibility reduction below ¾ SM NA. When local altimeter setting not received, use Culpoper altimeter setting and increase all DA 22 feet, and all MDA 40 feet; increase LNAV/VNAV all Cats visibility ½ mile.

**MISSED APPROACH:**  
Climb to 1800 then climbing right turn to 3000 direct CSN VORTAC and hold.

AWOS-3 <b>120.35</b>	CJR AWOS-3 <b>119.325</b>	POTOMAC APP CON <b>128.525 306.925</b>	UNICOM <b>122.7 (CTAF) 0</b>
-------------------------	------------------------------	---	---------------------------------



CATEGORY	A	B	C	D
LPV DA		527-¾ 200 (200-¾)		
LNAV/VNAV DA		585-¾ 258 (300-¾)		
LNAV MDA	780-1 453 (500-1)		780-1¾ 453 (500-1¾)	
CIRCLING	780-1 444 (500-1)	800-1 464 (500-1)	800-1½ 464 (500-1½)	900-2 564 (600-2)



NE-3, 31 DEC 2020 to 28 JAN 2021

NE-3, 31 DEC 2020 to 28 JAN 2021