

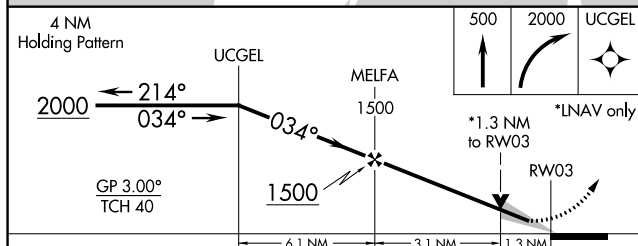
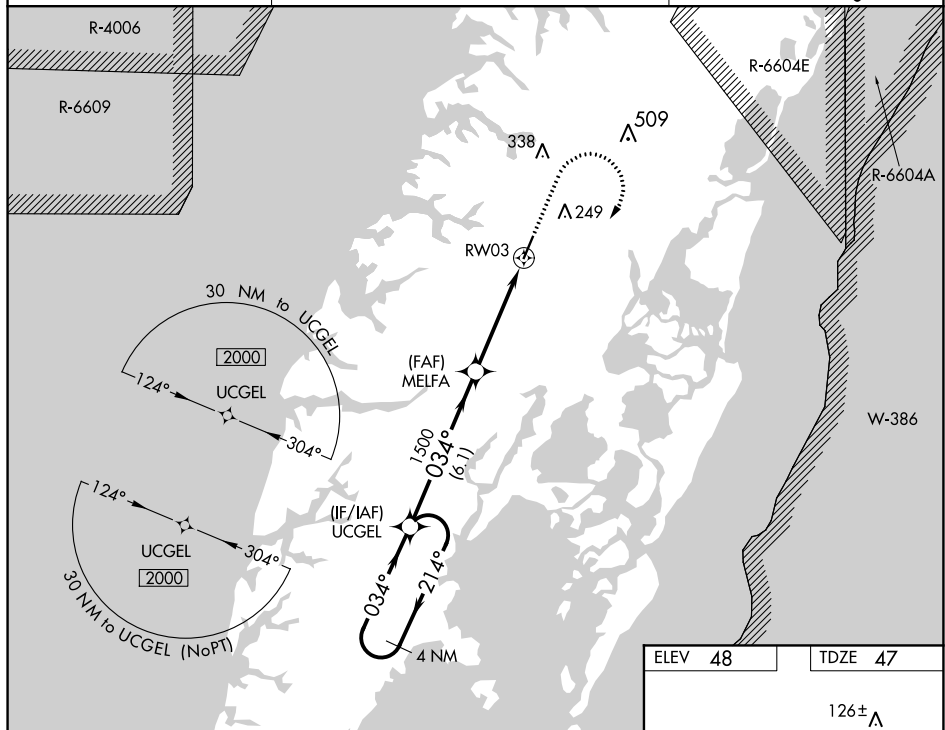
19115


RNAV (GPS) RWY 3
ACCOMACK COUNTY (MFV)

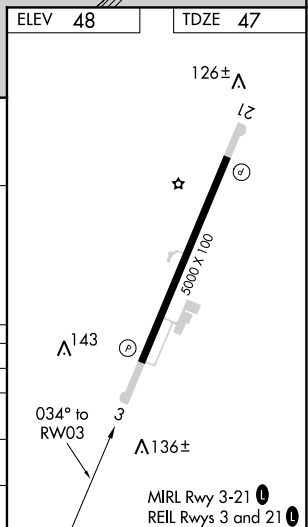
T For uncompensated Baro-VNAV systems, LNAV/VNAV NA below -15°C or above 54°C.

MISSED APPROACH: Climb to 500 then climbing right turn to 2000 direct UGEL and hold.

AWOS-3 118.175	PATUXENT APP CON [★] 127.95 314.0	UNICOM 122.8 (CTAF) 0
--------------------------	--	---------------------------------



CATEGORY		A		B		C		D	
LPV	DA			297-1		250 (300-1)			
RNAV/ VNAV	DA			349-1		302 (400-1)			
RNAV	MDA	500-1		453 (500-1)		500-1 $\frac{3}{8}$		453 (500-1 $\frac{3}{8}$)	
 CIRCLING		500-1 452 (500-1)		560-1 512 (600-1)		700-1 $\frac{3}{4}$ 652 (700-1 $\frac{3}{4}$)		700-2 652 (700-2)	



ACCOMACK COUNTY (MFV)
RNAV (GPS) RWY 3