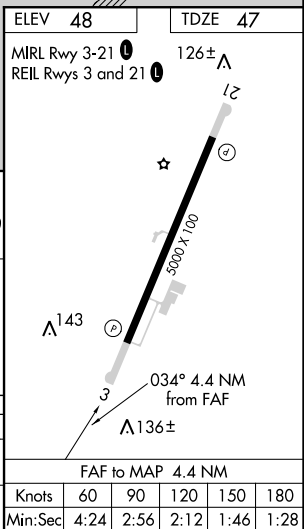
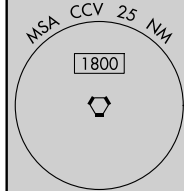


20254

LOC RWY 3  
ACCOMACK COUNTY (MFV)

**MISSED APPROACH:** Climbing right turn to 2000 on heading 220° and CCV VORTAC R-052 to UGEL/CCV 10.6 DME and hold.

UNICOM  
122.8 (CTAF) **L**

# ACCOMACK COUNTY (MFV) LOC RWY 3

NE-3, 31 DEC 2020 to 28 JAN 2021