

FORT BELVOIR, VIRGINIA

RNAV (GPS) RWY 14

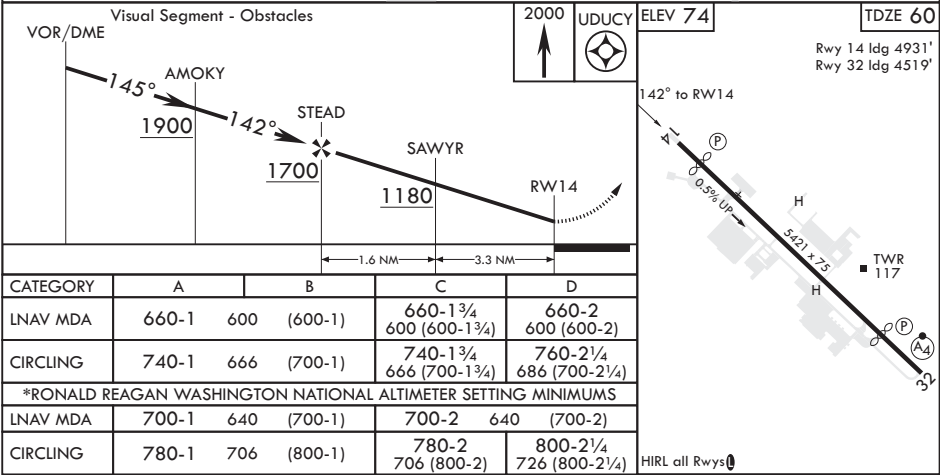
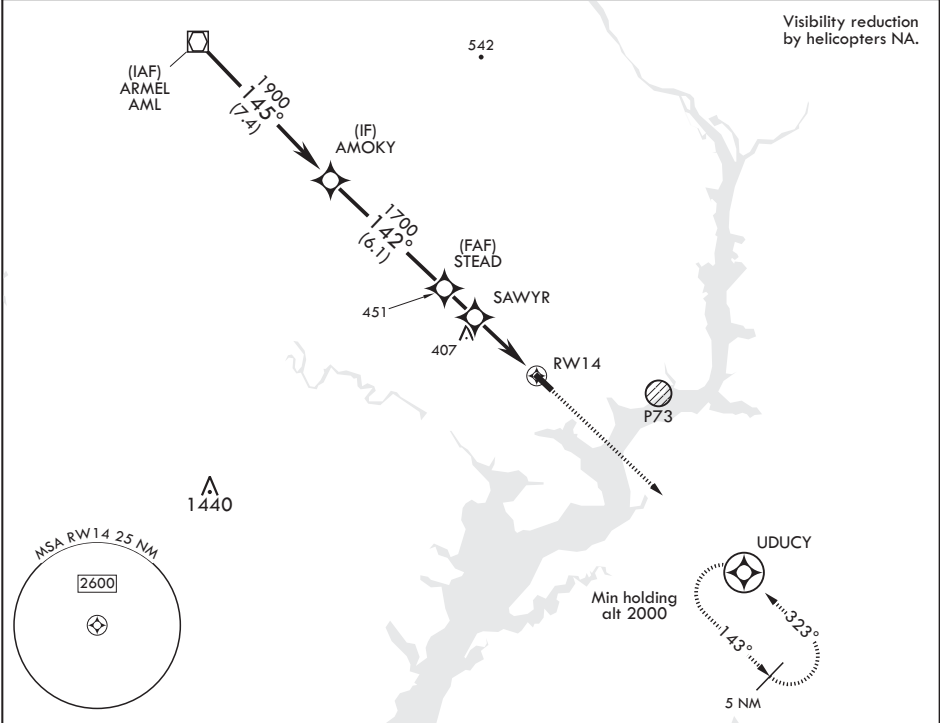
APCH CRS	Rwy Idg	4931
142°	TDZE	60
	Arpt Elev	74

AL-5504 (USA)

DAVISON AAF (KDAV)

<p>⚠ * If local altimeter setting not received, use Ronald Reagan Washington National altimeter setting, DME/DME RNP-0.3 NA.</p>	<p>MISSED APPROACH: Climb to 2000 direct UDCY and hold.</p>
--	---

ATIS 128.175	POTOMAC APP CON 118.95 319.1	TOWER * 126.3 (CTAF) 0 229.4	GND CON 121.9 351.8	CLNC DEL 351.8	PAR
-----------------	---------------------------------	---------------------------------	------------------------	-------------------	-----



FORT BELVOIR, VIRGINIA

38°43'N - 77°11'W

DAVISON AAF (KDAV)

Amdt 2B 16JUL20

RNAV (GPS) RWY 14

NE-3, 31 DEC 2020 to 28 JAN 2021

NE-3, 31 DEC 2020 to 28 JAN 2021