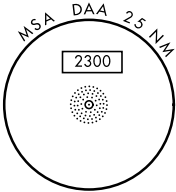
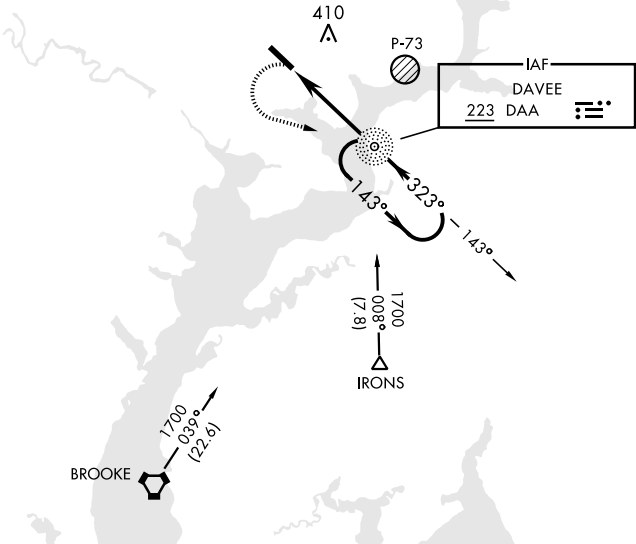



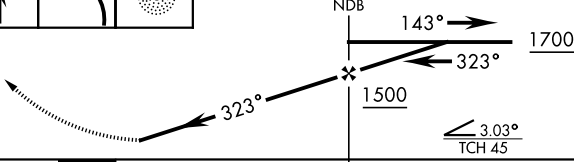


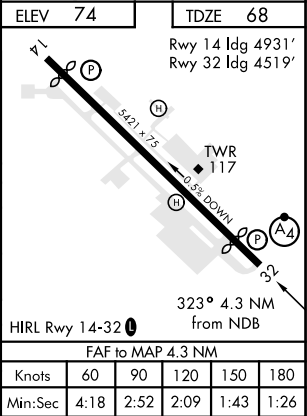
NDB RWY 32

NDB DAA 223		APCH CRS 323°		Rwy ldg 4519 TDZE 68 Arprt Elev 74		AL-5504 [USA]		DAVISON AAF (KDAV)	
<div><div></div><div>* When ALS inop, increase CAT D vis to 2 ¼ miles. ** If local altimeter setting not received, use Ronald Reagan Washington National altimeter setting.</div></div>				<div><div>MALSF</div><div><div>A4</div><div><div>223</div><div>74</div></div></div></div>		MISSED APPROACH: Climb to 800 then climbing left turn to 1700 direct DAA NDB and hold.			
ATIS 128.175		POTOMAC APP CON 118.95 319.1		DAVISON TOWER ★ 126.3 (CTAF) 0 229.4		GND CON 121.9 351.8		CLNC DEL 351.8	PAR

Inoperative table does not apply to S-32 CAT A and B.
Visibility reduction by helicopters NA.



800	1700	DAA		
				
				
CATEGORY	A	B	C	D
S-32 *	740/50	672 (700-1)	740-1 3/4 672 (700-1 3/4)	740-2 672 (700-2)
CIRCLING	740-1	666 (700-1)	740-1 3/4 666 (700-1 3/4)	760-2 1/4 686 (700-2 1/4)
** RONALD REAGAN WASHINGTON NATIONAL ALTIMETER SETTING MINIMUMS				
S-32 *	780/50	712 (800-1)	780-1 3/4 712 (800-1 3/4)	780-2 712 (800-2)
CIRCLING	780-1	706 (800-1)	780-1 3/4 706 (800-1 3/4)	800-2 1/4 726 (800-2 1/4)



NDB RWY 32

NE-3, 31 DEC 2020 to 28 JAN 2021

NE-3, 31 DEC 2020 to 28 JAN 2021