

WAAS
CH **40302**
W35A

APP CRS
355°

Rwy Idg
TDZE
70
Apt Elev
70

RNAV (GPS) RWY 35
SUMMIT (EVY)

RNP APCH.

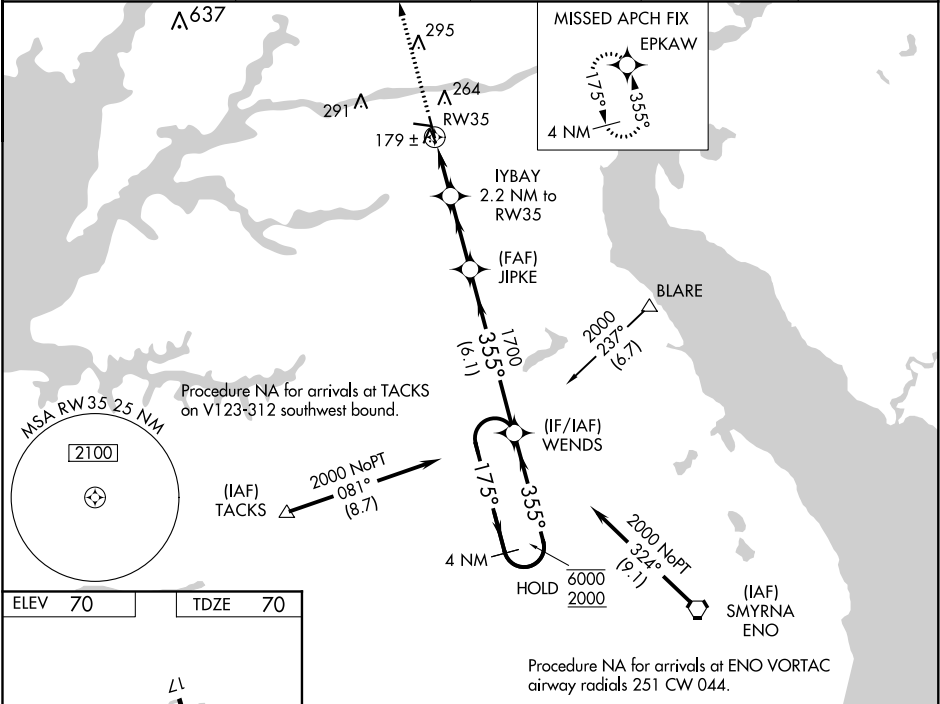
▼

NA

Baro-VNAV and VDP NA when using Wilmington altimeter setting. Rwy 35 helicopter visibility reduction below ¾ SM NA. For uncompensated Baro-VNAV systems, LNAV/VNAV NA below -15°C or above 47°C. When local altimeter setting not received, use Wilmington altimeter setting and increase all DA 27 feet, all MDA 40 feet and LNAV Cat C visibility ½ SM.

MISSED APPROACH: Climb to 2000 direct EPKAW and hold.

AWOS-3 132.325	PHILADELPHIA APP CON 118.35 323.1	CLNC DEL 125.3	UNICOM 122.725 (CTAF)	123.5
--------------------------	---------------------------------------------	--------------------------	---------------------------------	--------------



ELEV 70

TDZE 70

REIL Rwy 11 and 29

REIL Rwy 17 and 35

LIRL Rwy 11-29

MIRL Rwy 17-35

2000	EPKAW	VGSi and RNAV glidepath not coincident (VGSi Angle 3.00°/TCH 41°).		4 NM Holding Pattern
		IYBAY 2.2 NM to RW35	JIPKE 1700	WENDS
* LNAV only.	* 1.3 NM to RW35	* 820	1700	6000 175° 2000 355°
		1.3 NM	0.9 NM	2.7 NM
CATEGORY	A	B	C	D
LPV DA	320-1 250 (300-1)			
LNAV/VNAV DA	480-1½ 410 (500-1½)			
LNAV MDA	440-1 370 (400-1)			440-1¼ 370 (400-1¼)