

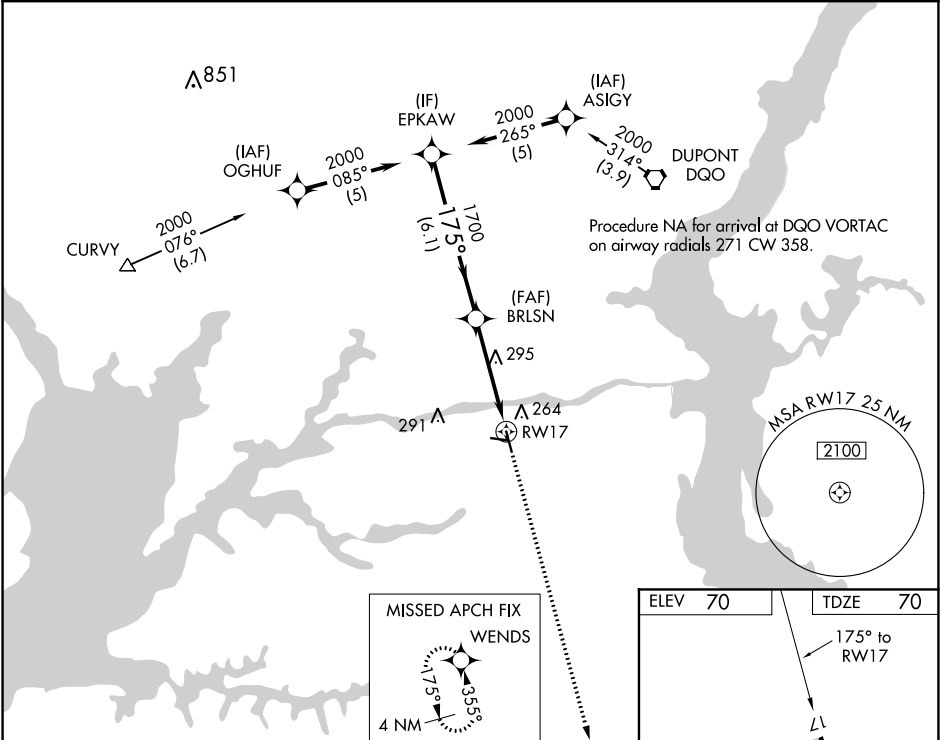
WAAS CH 49002 W17A	APP CRS 175°	Rwy Idg TDZE Apt Elev 4488 70 70
--	------------------------	--

RNAV (GPS) RWY 17

SUMMIT (EVY)

RNP APCH.	Procedure NA at night. Rwy 17 helicopter visibility reduction below 1 SM NA. Baro-VNAV NA when using Wilmington altimeter setting. For uncompensated Baro-VNAV systems, LNAV/VNAV NA below -15°C or above 47°C. When local altimeter setting not received, use Wilmington altimeter setting and increase all DA 27 feet, all MDA 40 feet and LNAV Cat C visibility 1/8 SM.	MISSED APPROACH: Climb to 2000 direct WENDS and hold.
-----------	--	---

AWOS-3 132.325	PHILADELPHIA APP CON 118.35 323.1	CLNC DEL 125.3	UNICOM 122.725 (CTAF)	123.5
--------------------------	---	--------------------------	---------------------------------	--------------



EPKAW		VGSI and RNAV glidepath not coincident (VGSI Angle 3.00/TCH 41).		2000	WENDS
GP 3.50° TCH 56		1700	BRLSN	1700	RWY 17
6.1 NM		4.2 NM			
CATEGORY	A	B	C	D	
LPV DA	541-1½ 471 (500-1½)			NA	
LNAV/VNAV DA	619-1¾ 549 (600-1¾)			NA	
LNAV MDA	560-1	490 (500-1)	560-1⅜ 490 (500-1⅜)	NA	
REIL Rwy 11 and 29 REIL Rwy 17 and 35 LIRL Rwy 11-29 MIRL Rwy 17-35					