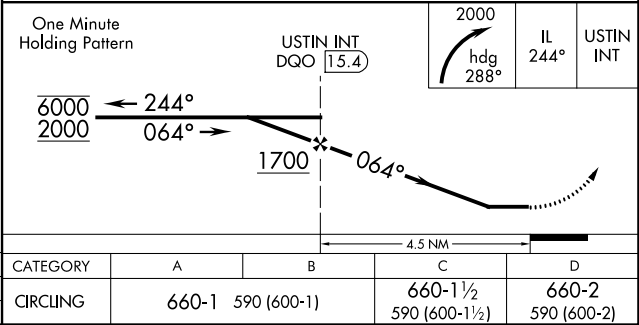
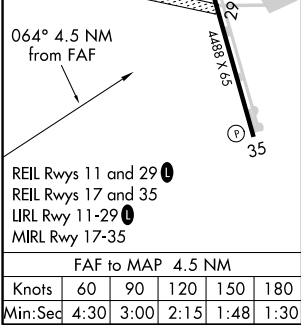
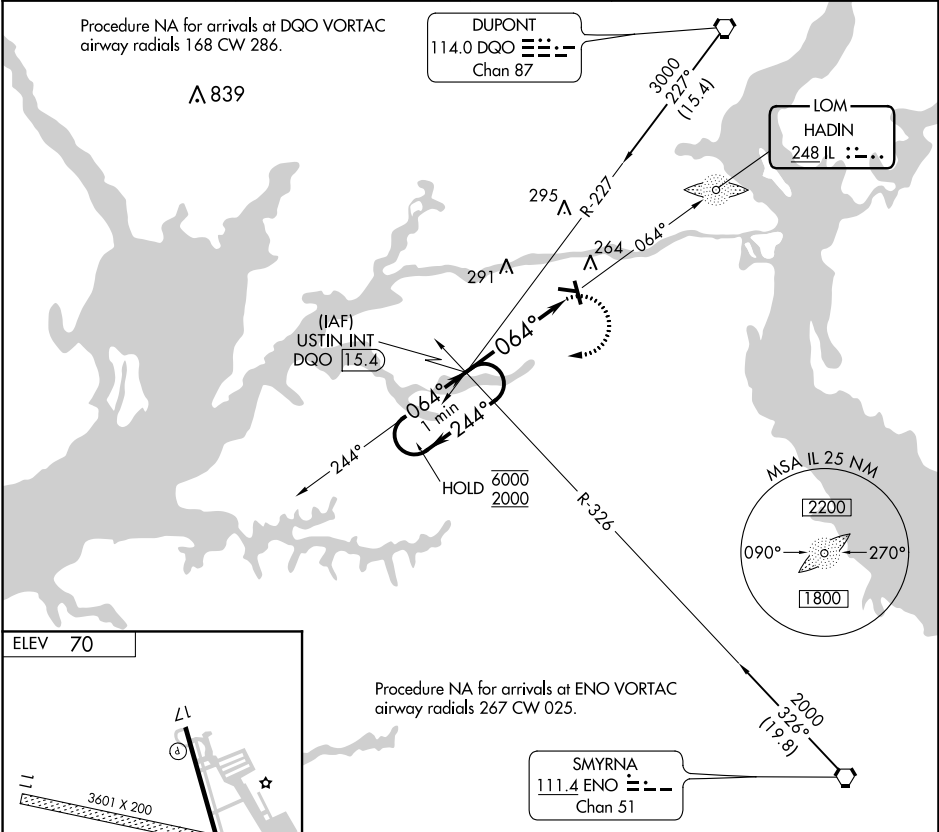


LOM IL 248	APP CRS 064°	Rwy Idg TDZE Apt Elev	N/A N/A 70
----------------------	------------------------	-----------------------------	-------------------------

NDB-A
SUMMIT (EVY)

NA Circling NA to Rwys 11 and 29. Circling Rwy 17 NA at night. When local altimeter setting not received, use Wilmington altimeter setting and increase all MDA 40 feet and Circling Cat C visibility ¼ SM.	MISSED APPROACH: Climbing right turn to 2000 on heading 288° and 244° bearing from HADIN LOM to USTIN INT/DGO 15.4 DME and hold, continue climb-in-hold to 2000.
--	--

AWOS-3 132.325	PHILADELPHIA APP CON 118.35 323.1	CLNC DEL 125.3	UNICOM 122.725 (CTAF)	123.5 0
--------------------------	---	--------------------------	---------------------------------	-----------------------



NE-3, 31 DEC 2020 to 28 JAN 2021

NE-3, 31 DEC 2020 to 28 JAN 2021