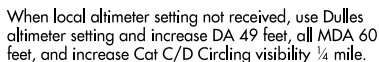


ILS or LOC RWY 16L
MANASSAS RGNL/HARRY P DAVIS FIELD (HEF)



MISSED APPROACH: Climb to 700, then climbing right turn to 3000 direct CSN VORTAC and hold.

ATIS 125.175	POTOMAC APP CON 128.525 306.925	MANASSAS TOWER ★ 133.1 (CTAF) 0 360.75	GND CON 121.8	CLNC DEL 120.2
-----------------	------------------------------------	---	------------------	-------------------

1940

3000 to GIGEEY
190° (2.6)
and 161° (4.6)

(IAF) MANNE

(CFBPP)

1498

1471

(IF) GIGEEY INT RADAR

2000

DORGE INT RADAR

JUKIK INT RADAR

464 ±
393 ±

499

340

458

524

R-041

R-057

R-067

R-207

207°

027°

ALTERNATE MISSED APCH FIX

LINDEN
LDN
114.3
Chan 90

CASANOVA
116.3 CSN
Chan 110

LOCALIZER 109.1
I-HEF

ARMEL
113.5 AML
Chan 82

MSA AML 25 NM
3400

ELEV 192 TDZE 192

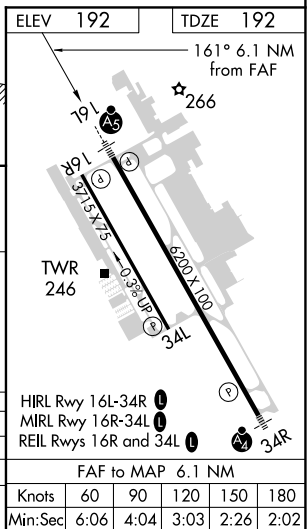
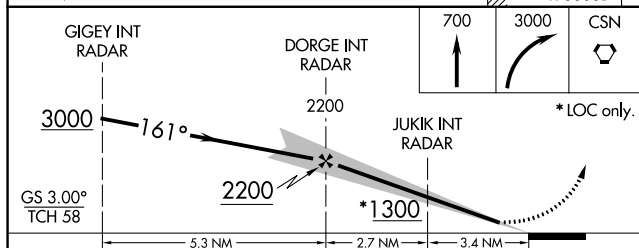
161° 6.1 NM from FAF




266

R-6608C

R-6608A

R-6608B



CATEGORY	A	B	C	D	MRL Rwy 16R-34L 
S-ILS 16L	392-1/2 200 (200-1/2)				REIL Rwys 16R and 34L 
S-LOC 16L	660-1/2 468 (500-1/2)		660-1 468 (500-1)		FAF to MAP 6.1 NM
 CIRCLING	720-1	740-1	840-1 3/4	880-2 1/4	Knots 60 90 120 150 180
	528 (600-1)	548 (600-1)	648 (700-1 3/4)	688 (700-2 1/4)	Min:Sec 6:06 4:04 3:03 2:26 2:02