

LOC I-HSP <u>108.7</u>	APP CRS 247°	Rwy Idg 5600 TDZE 3773 Apt Elev 3793
----------------------------------	------------------------	---

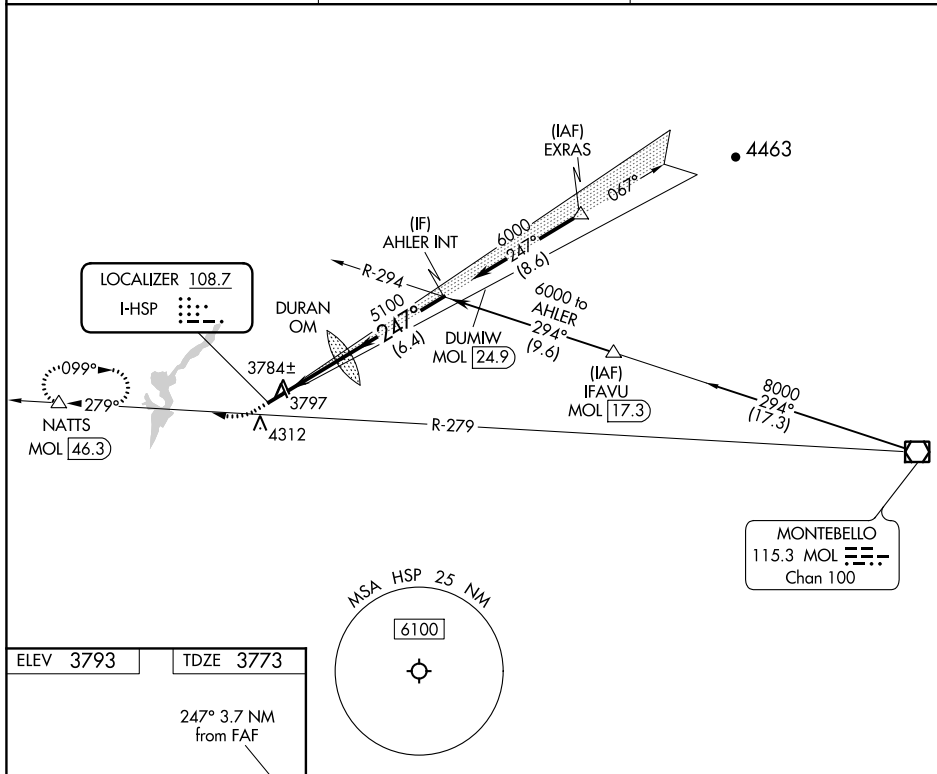
ILS or LOC RWY 25
INGALLS FIELD (HSP)

DME required.

T	Circling to Rwy 7 NA at night.
A NA	Circling NA southeast of Rwy 7-25.

MISSED APPROACH: Climb to 4360, then climbing right turn to 6200 on heading 270° and MOL R-279 to NATTS/MOL 46.3 DME and hold. (DME required).

AWOS-3 118.8	WASHINGTON CENTER 134.4 353.9	UNICOM 123.0 (CTAF) 0
------------------------	---	---------------------------------

[illegible]