

WAAS CH 40307 W33A	APP CRS 326°	Rwy ldg TDZE Apt Elev	6997 14 21
--	------------------------	-----------------------------	---------------------------------------

RNAV (GPS) RWY 33

MARTIN STATE (MTN)

▼

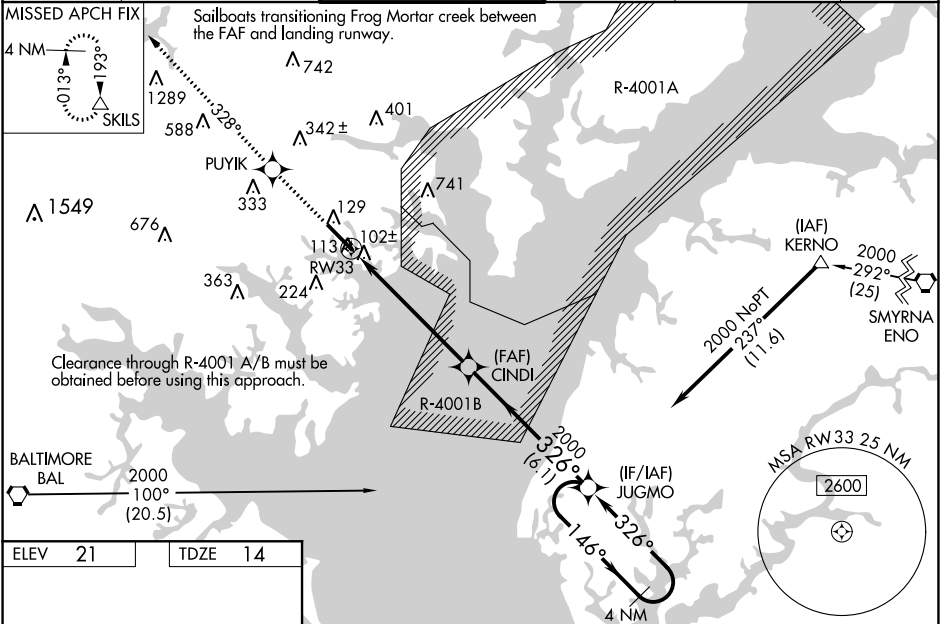
Baro-VNAV NA when using Baltimore/Washington Intl Thurgood Marshall altimeter setting.

⚠

For uncompensated Baro-VNAV systems, LNAV/VNAV NA below -15°C (5°F) or above 49°C (120°F). DME/DME RNP-0.3 NA. Helicopter visibility reduction below 1 SM NA. When local altimeter setting not received, use Baltimore/Washington Intl Thurgood Marshall altimeter setting and increase all DA to 454 and all MDA 60 feet, and increase LPV and LNAV/VNAV all Cats visibility to 1½ and LNAV Cat C to 1¼ and Circling Cat D visibility to 2¼.

MISSED APPROACH: Climb to 3000 direct PUYIK and on track 328° to SKILS and hold.

ATIS 124.925	POTOMAC APP CON 119.0 282.275	MARTIN TOWER★ 121.3(CTAF) 0 254.425	GND CON 121.8 253.4	CLNC DEL 121.8 (when twr closed)	UNICOM 122.95
------------------------	---	---	-------------------------------	---	-------------------------



ELEV 21

TDZE 14

TWR 98

6997' X 180

33

326° to RW33

3000

PUIYK

SKILS

VGSI and RNAV glidepath not coincident (VGSI Angle 2.91/TCH 44).

4 NM Holding Pattern

CINDI

JUGMO

RW33

2000

326°

146°

2000

GP 3.00° TCH 49

6 NM

6.1 NM

CATEGORY	A	B	C	D
LPV DA	402-1¼ 388 (400- 1¼)			
LNAV/VNAV DA	402-1¼ 388 (400- 1¼)			
LNAV MDA	380-1	366 (400-1)	380-1¼ 366 (400-1¼)	
CIRCLING	540-1	519 (600-1)	540-1½ 519 (600-1½)	680-2 659 (700-2)

HIRL Rwy 15-33
REIL Rws 15 and 33
Rwy 33 ldg 8100'
(Military Operations Only)
Rwy 15 take-off 8100'
(Military Operations Only)

NE-3, 31 DEC 2020 to 28 JAN 2021

NE-3, 31 DEC 2020 to 28 JAN 2021