

WAAS
CH **77502**
W14A

APP CRS
136°

Rwy Idg
TDZE **520**
Apt Elev **539**

RNAV (GPS) RWY 14

MONTGOMERY COUNTY AIRPARK (GAI)

RNP APCH.

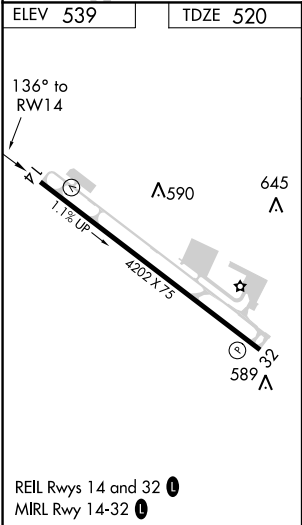
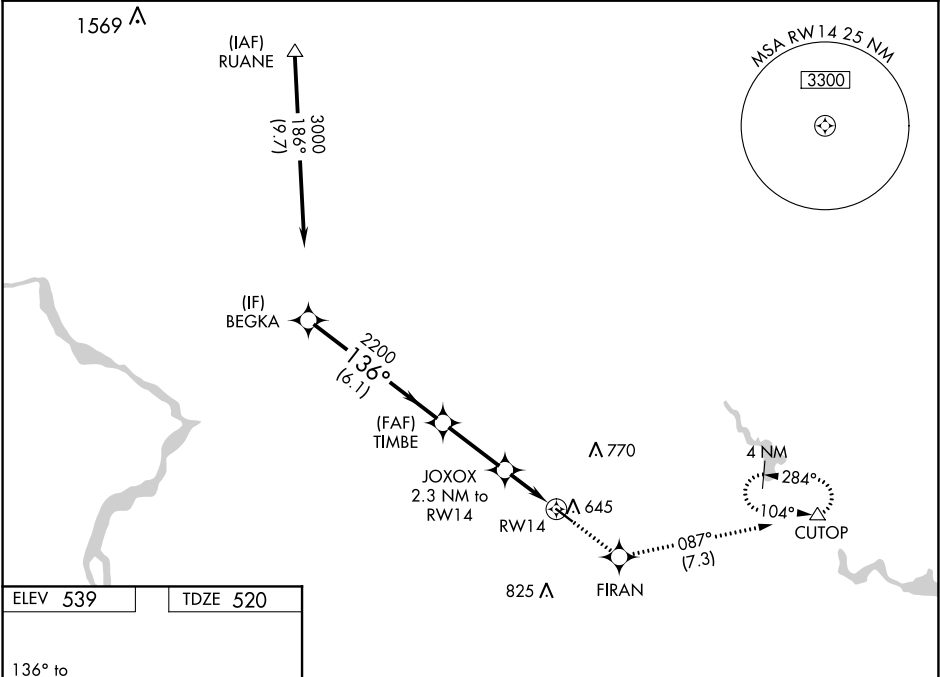
▼

⚠

Baro-VNAV NA when using Washington Dulles Intl altimeter setting. For uncompensated Baro-VNAV systems, LNAV/VNAV NA below -16°C or above 36°C. When local altimeter setting not received, use Washington Dulles Intl altimeter setting and increase all DA/MDAs 80 feet and all visibilities ¼ mile. Rwy 14 helicopter visibility reduction below ¾ SM NA.

MISSED APPROACH: Climb to 2100 direct FIRAN and on track 087° to CUTOP and hold.

AWOS-3PT 128.275	POTOMAC APP CON 128.7 307.9	CLNC DEL 121.6	UNICOM 123.075 (CTAF) 1
----------------------------	---------------------------------------	--------------------------	-----------------------------------



VGSI and RNAV glidepath not coincident (VGSI Angle 3.00/TCH 53).				2100 ↑	FIRAN ✦	tr 087°	CUTOP △
BEGKA				*LNAV only			
3000				TIMBE 2200	JOXOX 2.3 NM to RW14	*1.4 NM to RW14	RW14
GP 3.00° TCH 40				136°	*1280		
6.1 NM				2.8 NM	1 NM	1.4 NM	
CATEGORY	A		B		C		D
LPV DA	789-1 269 (300-1)						
LNAV/ VNAV	919-1½ 399 (400-1½)						
LNAV MDA	980-1 460 (500-1)				980-1⅜ 460 (500-1⅜)		980-1½ 460 (500-1½)