

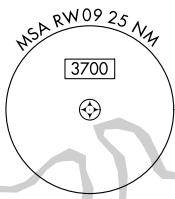
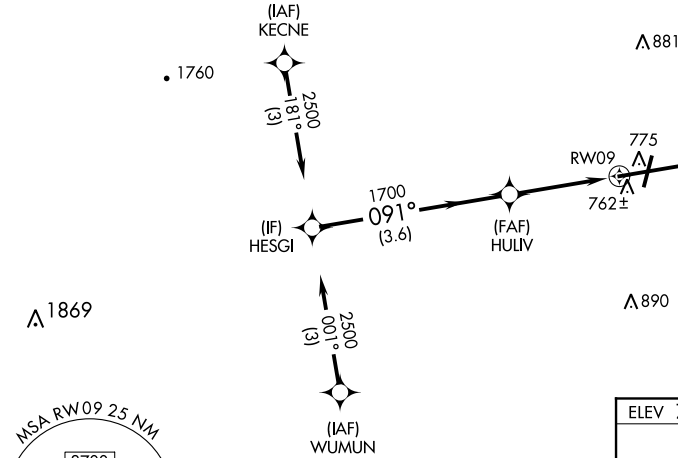
APP CRS	Rwy Idg	7000
091°	TDZE	695
	Apt Elev	703

COPTER RNAV (GPS) RWY 9
HAGERSTOWN RGNL-RICHARD A HENSON FIELD (HGR)

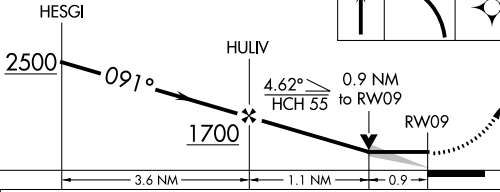
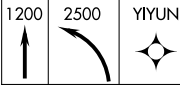
<p>▼ DME/DME RNP-0.3 NA. VDP NA with Martinsburg altimeter setting. When local altimeter setting not received, use Martinsburg altimeter setting and increase MDA 80 feet.</p>	<p>MISSED APPROACH: Climb to 1200 then climbing left turn to 2500 direct YIYUN and hold.</p>
---	--

ASOS 126.375	POTOMAC APP CON 126.825 239.025	HAGERSTOWN TOWER ★ 120.3 (CTAF) 0 225.4	GND CON 120.8	UNICOM 122.95
-----------------	------------------------------------	--	------------------	------------------

Limit initial and intermediate approach to 90K.
Limit final and missed approach to 70K.
Increase to 90K upon reaching the missed approach altitude.



VGSI and descent angles not coincident (VGSI Angle 3.00/TCH 55).



ELEV 703

TDZE 695

REIL Rwy 2 and 20

REIL Rwy 9

MIRL Rwy 2-20

HIRL Rwy 9-27

NE-3, 31 DEC 2020 to 28 JAN 2021

NE-3, 31 DEC 2020 to 28 JAN 2021