

WAAS CH 99309 W01D	APP CRS 011°	Rwy Idg 9400 TDZE 296 Apt Elev 312
--	------------------------	---

RNAV (GPS) RWY 1L

WASHINGTON DULLES INTL (IAD)

T For uncompensated Baro-VNAV systems, LNAV/VNAV NA below -1.5°C (5°F) or above 48°C (118°F). DME/DME RNP-0.3 NA. Simultaneous approach authorized with ILS or LOC Rwy 1R, ILS Rwy 1R (Cat II), ILS Rwy 1R (Cat III). LNAV procedure NA during simultaneous operations. Use of FD or AP providing RNAV track guidance required during simultaneous operations.

ALSF-2



MISSED APPROACH: Climb to 4000 direct COCAV and on 300° track to PRISM and on 346° track to MRB VORTAC and hold.

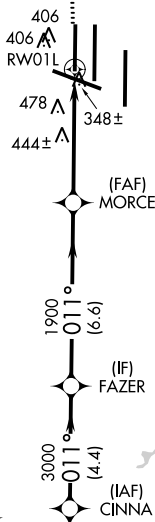
D-ATIS	POTOMAC APP CON	DULLES TOWER	GND CON
134.85	120.45 306.925 (241°-330°) 128.525 306.925 (091°-240°) 126.1 338.25 (331°-090°)	120.1 317.8 (Rwy 1R/19L) 120.25 348.6 (Rwy 1C/19C) 134.425 348.6 (Rwys 1L/19R and 12/30)	121.9 317.8 (EAST) 121.625 348.6 (WEST)

MISSED APCH FIX
MARTINSBURG
MRB



△¹⁴⁹⁸
△¹⁴⁷¹

COCAV



Λ555 Λ695

Procedure NA for arrivals at CSN VORTAC
on V286 northwest bound.

CASANOVA
CSN

4000
092°
(18.3)

