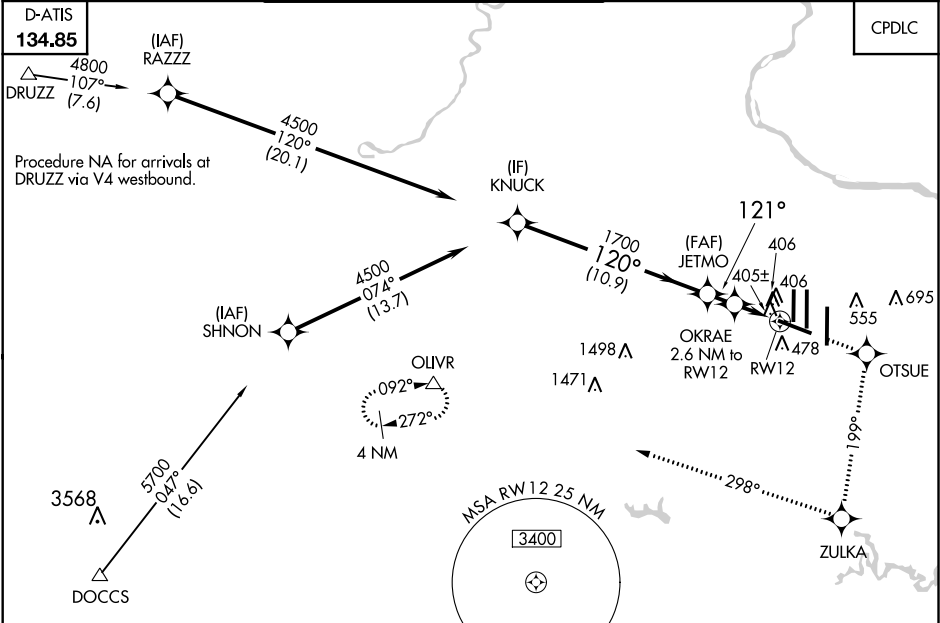


WAAS CH <b>86310</b> <b>W12A</b>	APP CRS <b>121°</b>	Rwy ldg <b>10501</b> TDZE <b>310</b> Apt Elev <b>312</b>
--	------------------------	--

**RNAV (GPS) RWY 12**  
WASHINGTON DULLES INTL (IAD)

For inoperative MALS, increase LNAV Cat D visibility to RVR 6000. For uncompensated Baro-VNAV systems, LNAV/VNAV NA below -15°C (5°F) or above 48°C (118°F). DME/DME RNP-0.3 NA.	MALS R	MISSED APPROACH: Climb to 4000 direct OTSUE and via 199° track to ZULKA and right turn via 298° track to OLIVR and hold.
---	--------	--

POTOMAC APP CON <b>120.45 306.925</b> (241°-330°) <b>128.525 306.925</b> (091°-240°) <b>126.1 338.25</b> (331°-090°)	DULLES TOWER <b>120.1 317.8</b> (Rwys 1R/19L) <b>120.25 348.6</b> (Rwy 1C/19C) <b>134.425 348.6</b> (Rwys 1L/19R and 12/30)	GND CON <b>121.9 317.8</b> (EAST) <b>121.625 348.6</b> (WEST)	CLNC DEL <b>135.7 317.8</b>
---	--	---	--------------------------------



ELEV 312		D		TDZE 310	
VGSI and RNAV glidepath not coincident (VGSI Angle 3.00/TCH 66).					
* LNAV only.					
CATEGORY	A		B		D
LPV DA			510/18		200 (200-½)
LNAV/VNAV DA			737/50		427 (500-1)
LNAV MDA	680/24		370 (400-½)		680/50 370 (400-1)
CIRCLING	940-1 628 (700-1)		940-1¾ 628 (700-1¾)		940-2 628 (700-2)
TDZ/CL Rwys 1C, 1L, 1R, 12, 19C and 19R REIL Rwy 30 HIRL all Rwys					

NE-3, 31 DEC 2020 to 28 JAN 2021

NE-3, 31 DEC 2020 to 28 JAN 2021