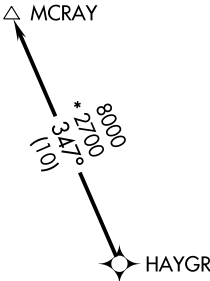
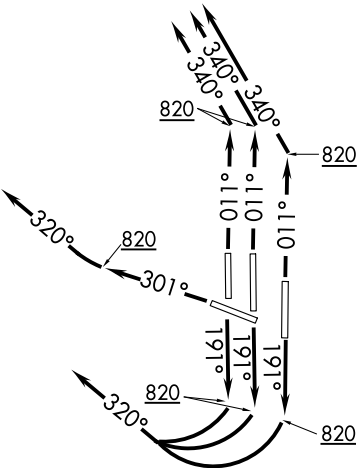


D-ATIS  
134.85  
CLNC DEL  
135.7 317.8  
CPDLC  
GND CON  
121.9 317.8 (EAST)  
121.625 348.6 (WEST)  
DULLES TOWER  
120.1 317.8 (Rwy 1R/19L)  
120.25 348.6 (Rwy 1C/19C)  
134.425 348.6 (Rwys 1L/19R, 12/30)  
POTOMAC DEP CON  
125.05 350.2



TOP ALTITUDE:  
3000



- NOTE: RNAV 1.
- NOTE: DME/DME/IRU or GPS required.
- NOTE: RADAR required.
- NOTE: Turbojets only.

TAKEOFF MINIMUMS:  
Rwys 1L/C/R, 19L/C/R, 30:  
Standard with minimum climb  
of 500' per NM to 820.

NOTE: Chart not to scale.

DEPARTURE ROUTE DESCRIPTION

TAKEOFF RUNWAY 1L/C/R: Climb heading 011° to 820, then on heading 340° or as assigned by ATC, expect RADAR vectors to HAYGR, thence . . . .

TAKEOFF RUNWAYS 19L/C/R: Climb heading 191° to 820, then right turn heading 320° or as assigned by ATC, expect RADAR vectors to HAYGR, thence . . . .

TAKEOFF RUNWAY 30: Climb heading 301° to 820, then on heading 320° or as assigned by ATC, expect RADAR vectors to HAYGR, thence . . . .

. . . . on track 347° to MCRAY, maintain 3000 or as directed by ATC. Expect clearance to filed altitude within ten (10) minutes after departure.

NE-3, 31 DEC 2020 to 28 JAN 2021

NE-3, 31 DEC 2020 to 28 JAN 2021