


ILS or LOC RWY 19L
WASHINGTON DULLES INTL (IAD)

ALSF-2

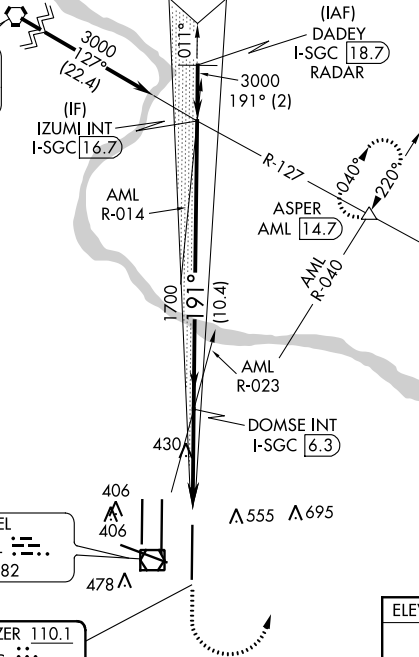
MISSED APPROACH: Climb to 800 then climbing left turn to 3000 on heading 010° and AML VOR/DME R-040 to ASPER INT/AML 14.7 DME and hold.

D-ATIS
134.85

IAF
MARTINSBURG
112.1 MRB 
Chan 58

Procedure NA for arrivals
at MRB VORTAC on
airway radials 088 CW 137.

CPDLC



FAF to MAP 4.2 NM					
Knots	60	90	120	150	180
Min:Sec	4:12	2:48	2:06	1:41	1:24

VGSI and ILS glidepath not coincident (VGSI Angle 3.00/TCH 75).				800 ↑	3000 hdg 010°	AML R-040	ASPER △
DADEY I-SGC 18.7 RADAR		IZUMI INT I-SGC 16.7		DOMSE INT I-SGC 6.3		*LOC only.	
3000 — 191° — 3000				1700		*I-SGC 3.3 I-SGC 2.1	
GS 3.00° TCH 55°				1700			
2 NM		10.4 NM		3 NM		1.2 NM	
CATEGORY	A		B		C		D
S-ILS 19L	**502/24 200 (200-½)						
S-LOC 19L	740/24 438 (500-½)		740/40 438 (500-¾)		740/50 438 (500-1)		