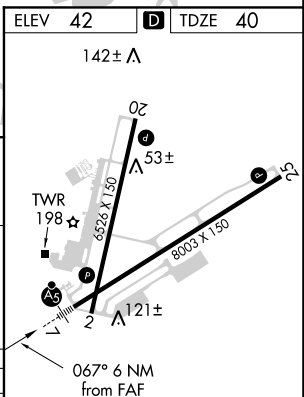
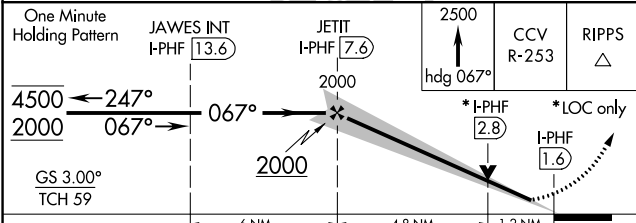
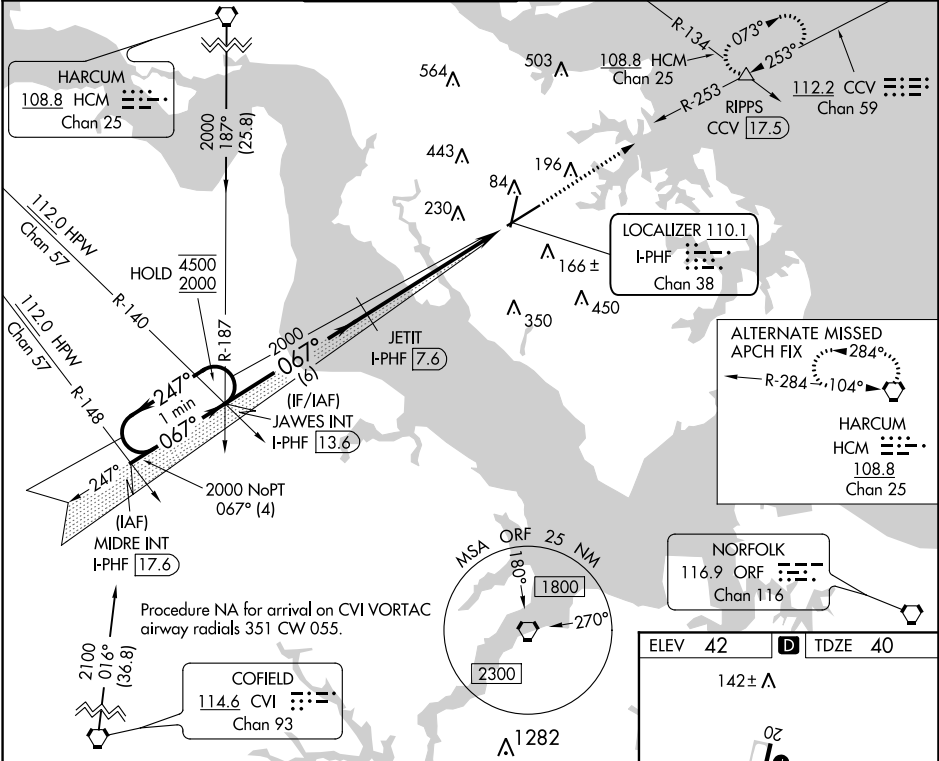


LOC/DME I-PHF	APP CRS	Rwy Idg	8003
110.1	067°	TDZE	40
Chan 38		Apt Elev	42

ILS or LOC RWY 7
NEWPORT NEWS/WILLIAMSBURG INTL (PHF)

DME required.		MALSR	MISSED APPROACH: Climb to 2500 on heading 067° and on CCV VORTAC R-253 to RIPPS INT/CCV 17.5 DME and hold, continue climb-in-hold to 2500.
# RVR 1800 authorized with use of FD or AP or HUD to DA.			

ATIS	NORFOLK APP CON	NEWPORT NEWS TOWER*	GND CON	CLNC DEL	UNICOM
128.65	125.7 335.625	118.7 (CTAF) 0 257.9	121.9 348.6	121.65 225.4	122.95



CATEGORY	A	B	C	D
S-ILS 7 #	240/24		200 (200-½)	
S-LOC 7	480/24	440 (500-½)	480/40	440 (500-¾)
CIRCLING	520-1 478 (500-1)	540-1 498 (500-1)	760-2 718 (800-2)	780-2¼ 738 (800-2¼)

REIL Rwy 20 and 25
HIRL Rwy 2-20 and 7-25

NE-3, 31 DEC 2020 to 28 JAN 2021

NE-3, 31 DEC 2020 to 28 JAN 2021