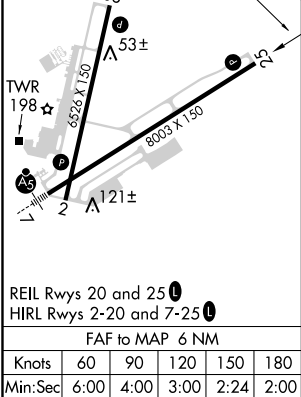
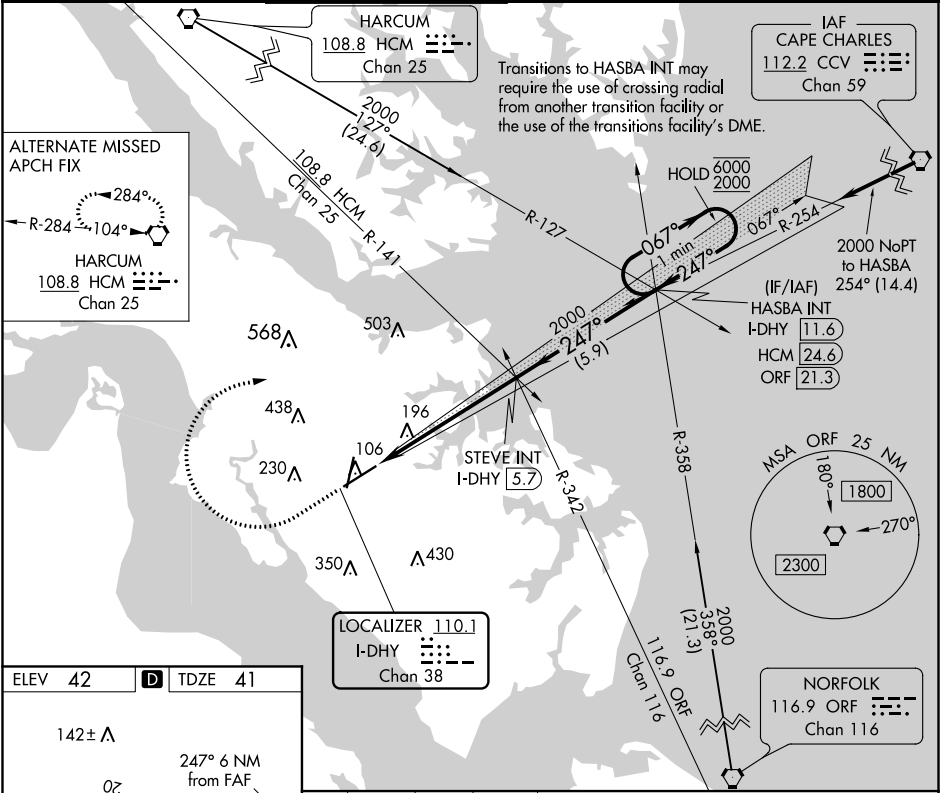


LOC/DME I-DHY	APP CRS	Rwy Idg	8003
<b>110.1</b>	<b>247°</b>	TDZE	<b>41</b>
Chan <b>38</b>		Apt Elev	<b>42</b>

ILS or LOC RWY 25  
NEWPORT NEWS/WILLIAMSBURG INTL (PHF)

**MISSED APPROACH:** Climb to 500 then climbing right turn to 2500 on heading 080° and CCV VORTAC R-254 to HASBA INT/I-DHY 11.6 DME and hold.

ATIS <b>128.65</b>	NORFOLK APP CON <b>125.7</b>	NEWPORT NEWS TOWER ★ <b>118.7</b> (CTAF) <b>0 257.9</b>	GND CON <b>121.9 348.6</b>	CLNC DEL <b>121.65 225.4</b>	UNICOM <b>122.95</b>
-----------------------	---------------------------------	--	-------------------------------	---------------------------------	-------------------------



500	2500	CCV R-254	HASBA INT	VGSI and ILS glidepath not coincident (VGSI Angle 3.00/TCH 71).	One Minute Holding Pattern
↑	hdg 080°			STEVE INT I-DHY 5.7	HASBA INT I-DHY 11.6
*LOC only	*I-DHY 0.9			2000	2000
I-DHY 0.3				247°	067°
				247°	6000
					2000
					GS 3.00° TCH 55
	1.2	4.8 NM	5.9 NM		
CATEGORY	A	B	C	D	
S-ILS 25		241-¾	200 (200-¾)		
S-LOC 25	480-1	439 (500-1)	480-1¼	439 (500-1¼)	
CIRCLING	520-1 478 (500-1)	540-1 498 (500-1)	760-2 718 (800-2)	780-2¼ 738 (800-2¼)	

NE-3, 31 DEC 2020 to 28 JAN 2021

NE-3, 31 DEC 2020 to 28 JAN 2021