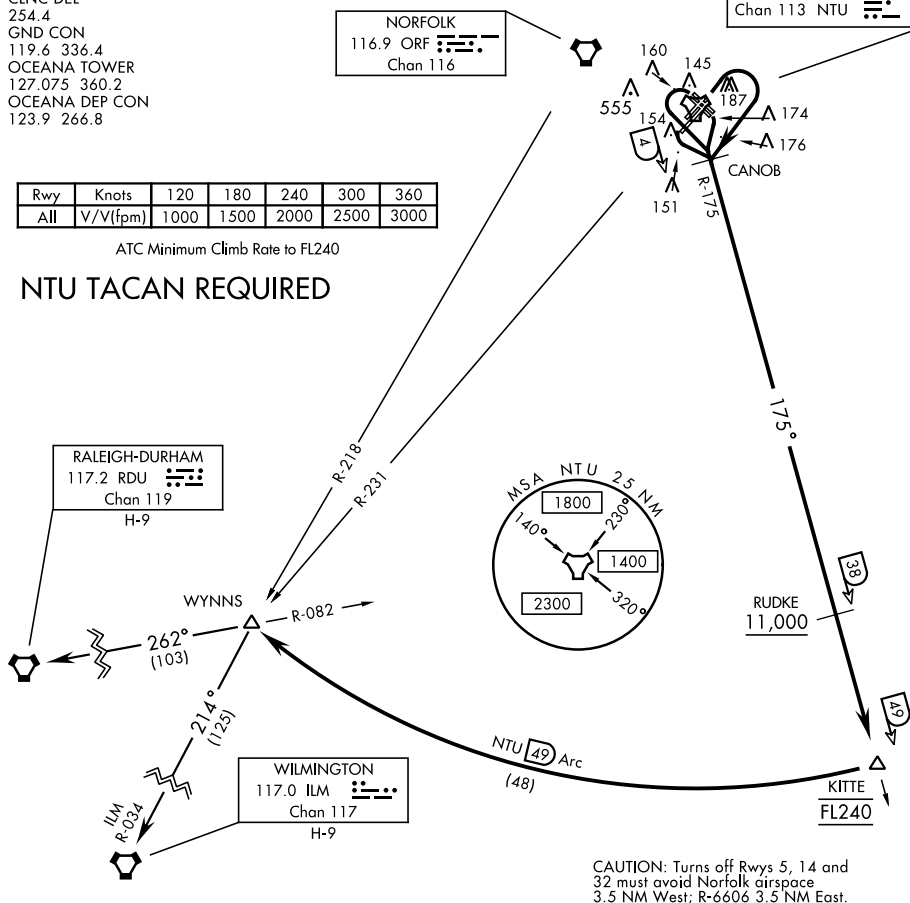


OCEANA
Chan 113 NTU =*

| | | | | | | |
|-----|----------|------|------|------|------|------|
| Rwy | Knots | 120 | 180 | 240 | 300 | 360 |
| All | V/V(fpm) | 1000 | 1500 | 2000 | 2500 | 3000 |

ATC Minimum Climb Rate to FL240

NTU TACAN REQUIRED



DEPARTURE ROUTE DESCRIPTION

TAKE-OFF RWY 5L/R or 14L/R: Climbing right turn to intercept NTU TACAN R-175 to CANOB.
Thence...

TAKE-OFF RWY 23L/R: Climbing left turn to intercept NTU TACAN R-175 to CANOB. Thence...

TAKE-OFF RWY 32L/R: Climbing left turn within NTU TACAN 2 DME to intercept NTU R-175. Thence...

...Via NTU R-175 to KITTE, arc south of NTU via the 49 mile arc to WYNNNS. Cross RUDKE at or above 11,000. Cross KITTE at FL240, or as assigned. Thence...

RALEIGH-DURHAM TRANSITION (WYNN3•RDU): Via RDU VORTAC R-082 to RDU.

WILMINGTON TRANSITION (WYNNS3-ILM): Via ILM VORTAC R-034 to ILM.

Orig 03JAN19

OCEANA NAS (APOLLO SOUCEK FIELD) (KNTU)