

TACAN RWY 5R

TACAN NTU Chan <b>113</b>	APCH CRS <b>043°</b>	Rwy Idg <b>12,008</b> TDZE <b>19</b> Arprt Elev <b>22</b>
------------------------------	-------------------------	---

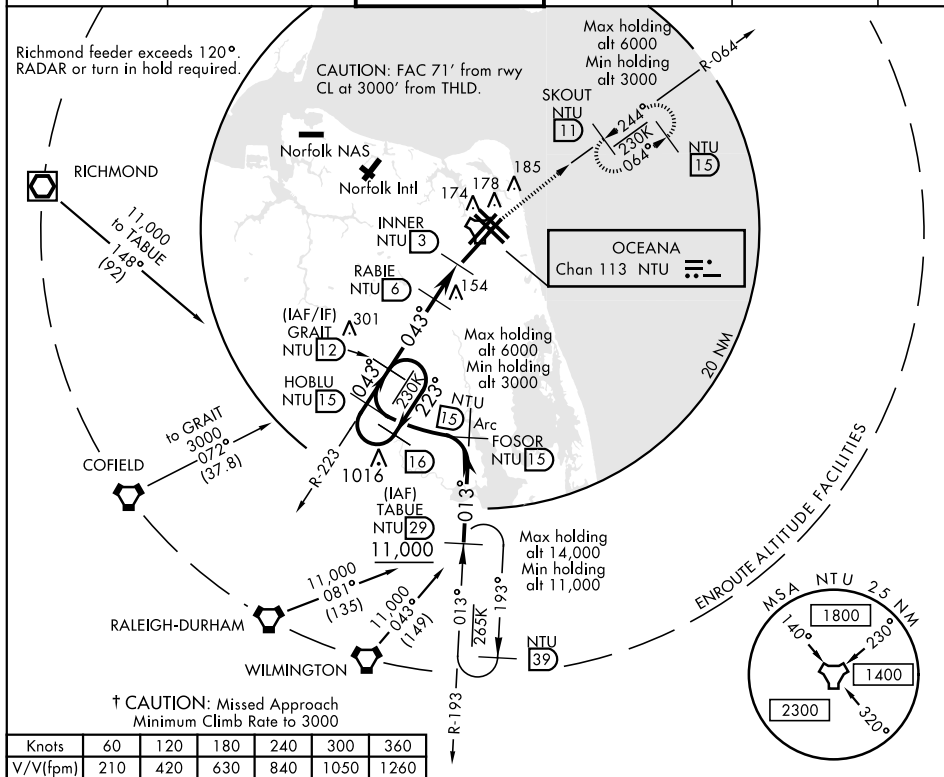
AL-934 [USN] OCEANA NAS (APOLLO SOUCEK FIELD) (KNTU)

**T** \* When ALS inop, increase CAT AB vis to 1 mile, CAT CD vis to 1¼ miles.



† MISSED APPROACH: Climb to 3000 via R-223 to NTU TACAN and via R-064 to SKOUT and hold.

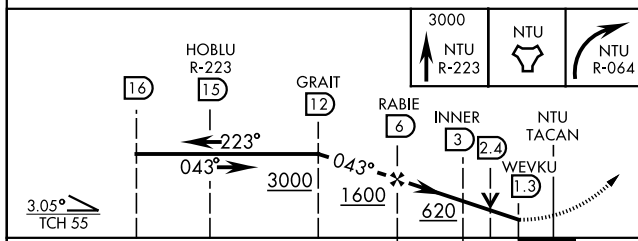
ATIS 317.6	APP CON 123.9 266.8	OCEANA TOWER 127.075 360.2	GND CON 119.6 336.4	CLNC DEL 254.4	ASR/ PAR
---------------	------------------------	-------------------------------	------------------------	-------------------	-------------



Knots	60	120	180	240	300	360
V/V(fpm)	210	420	630	840	1050	1260

ATC Minimum Climb Rate

EMERG SAFE ALT 100 NM 4100



	A		B		C		D	
S-5R *	440-1/2	421	(500-1/2)		440-3/4	421	(500-3/4)	
<div style="display: inline-block; width: 10px; height: 10px; background-color: black; margin-right: 5px;"></div> CIRCLING	500-1	478	(500-1)		640-1 1/4		640-2	
					618 (700-1 1/2)		618 (700-2)	

