

TACAN RWY 32L/R

TACAN NTU Chan 113	APCH CRS 309°	Rwy Idg TDZE Arpt Elev	32L 8000 32L 22 22	32R 8001 32R 21	AL-934 [UN] OCEANA NAS (APOLLO SOUCEK FIELD) (KNTU)
------------------------------	-------------------------	------------------------------	---	----------------------------------	--

<p>† When ALS inop, increase CAT AB vis to 1 mile, CAT CDE vis to 1¼ miles.</p>	<p>ALSF-1</p> 	<p>† MISSED APPROACH: Climbing left turn to 3000, intercept NTU TACAN R-223 to GRAIT and hold.</p>
---	---	--

ATIS 317.6	APP CON 123.9 266.8	OCEANA TOWER 127.075 360.2	GND CON 119.6 336.4	CLNC DEL 254.4	ASR/ PAR
---------------	------------------------	-------------------------------	------------------------	-------------------	-------------

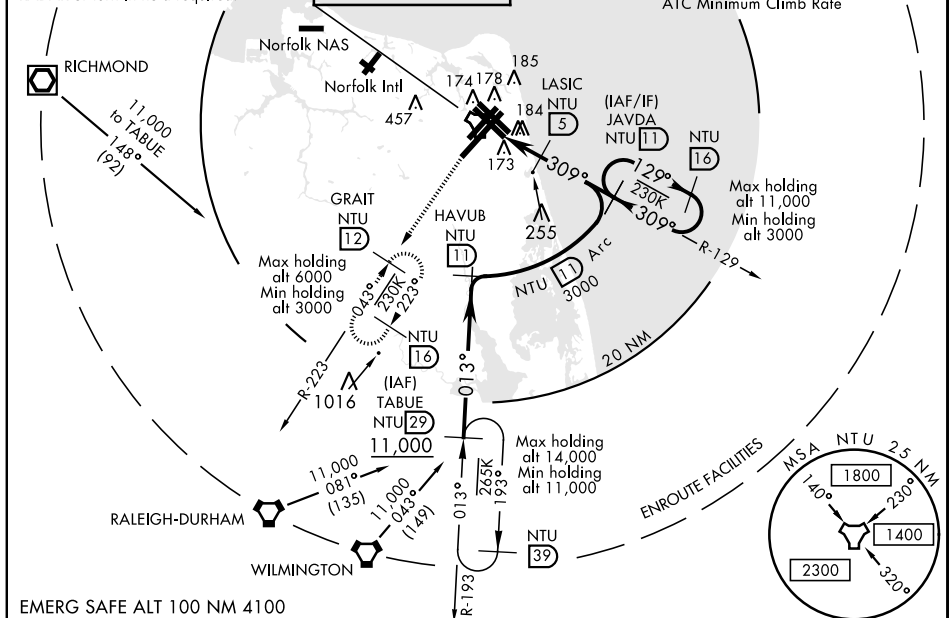
CAUTION: Rwy 32L FAC 171' from rwy CL at 3000' from THLD. / Rwy 32R FAC 529' from rwy CL at 3000' from THLD.	† CAUTION: Missed Approach Minimum Climb Rate to 3000
---	--

Knots	60	120	180	240	300	360
V/V(fpm)	220	440	660	880	1100	1320

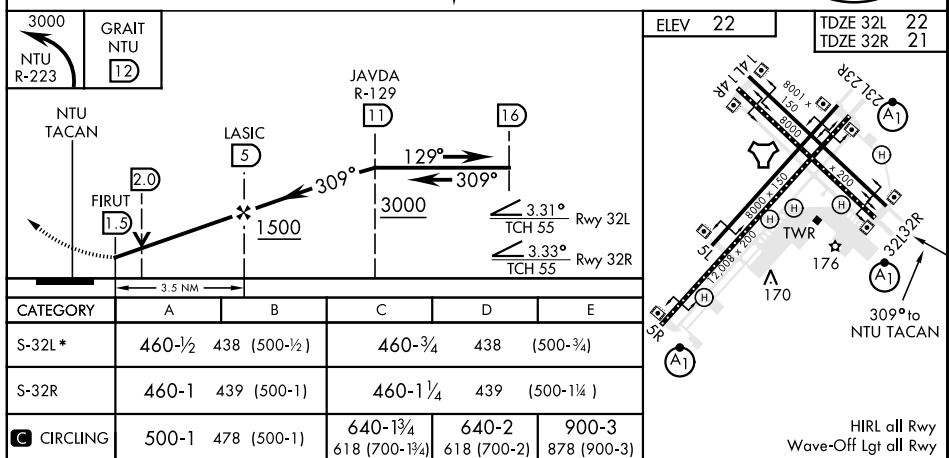
RICHMOND feeder turn exceeds 120°.
RADAR or turn in hold required.

OCEANA
13 NTU

ATC Minimum Climb Rate



EMERG SAFE ALT 100 NM 4100



VIRGINIA BEACH, VIRGINIA

36°49'N-76°02'W

OCEANA NAS (APOLLO SOUCEK FIELD) (KNTU)

TACAN RWY 32L/R

Amdt 4 03JAN19

HIRL all Rwy
Wave-Off Lgt all Rwy

NE-3, 31 DEC 2020 to 28 JAN 2021