

VIRGINIA BEACH, VIRGINIA

TACAN RWY 23L/R

TACAN NTU Chan 113	APCH CRS 244°	Rwy ldg 23L 12,008 TDZE 23L 21 Arpt Elev 22	23R 8000 23R 21
-----------------------	------------------	---	--------------------

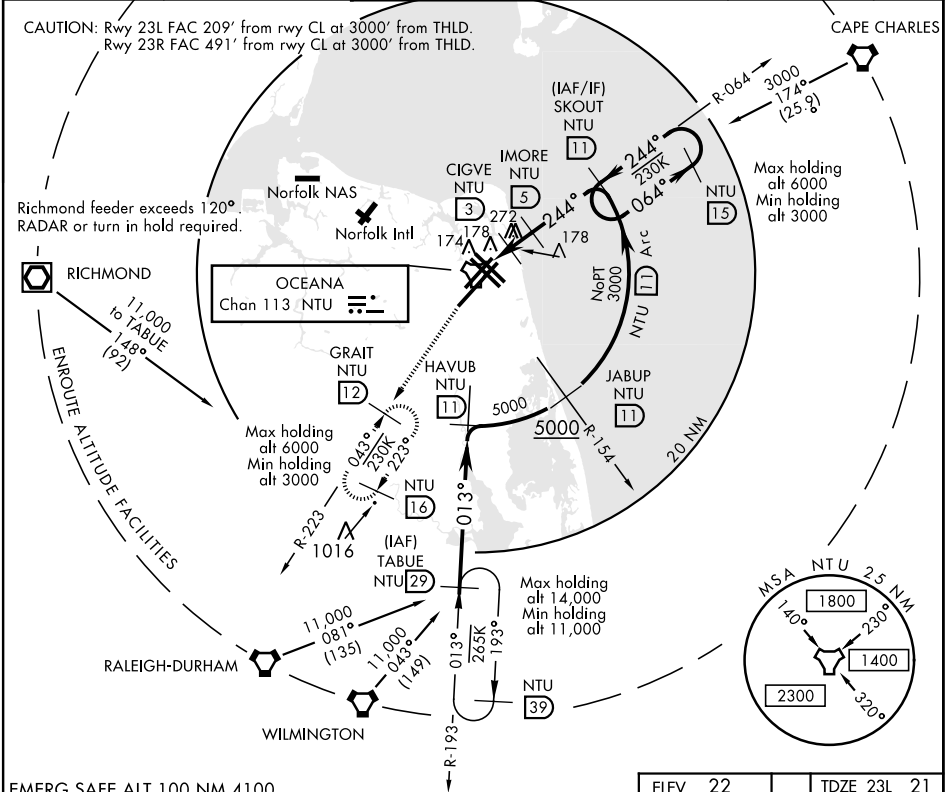
AL-934 [USN]  
OCEANA NAS (APOLLO SOUCEK FIELD) (KNTU)

⚠ \* When ALS inop, increase CAT AB vis to 1 mile,  
CAT CD vis to 1¼ miles.



MISSED APPROACH: Climb to 3000 via R-064 to NTU  
TACAN and via R-223 to GRAIT and hold.

ATIS 317.6	APP CON 123.9 266.8	OCEANA TOWER 127.075 360.2	GND CON 119.6 336.4	CLNC DEL 254.4	ASR/ PAR
---------------	------------------------	-------------------------------	------------------------	-------------------	-------------



EMERG SAFE ALT 100 NM 4100

3000

NTU

NTU R-064

NTU

NTU R-223

TACAN

WENID

1.3

1.8

CIGVE

3

IMORE

5

244°

1600

840

3000

064°

11

15

3.39°

TCH 55

Rwy 23L

3.38°

TCH 55

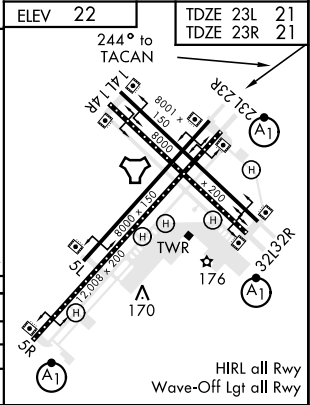
Rwy 23R

5

1.7 NM

2 NM

CATEGORY	A	B	C	D
S-23L *	460-¾		439 (500-¾)	
S-23R	460-1	439 (500-1)	460-1¼	439 (500-1¼)
CIRCLING	500-1	478 (500-1)	640-1¼ 618 (700-1¼)	640-2 618 (700-2)



VIRGINIA BEACH, VIRGINIA

36°49'N-76°02'W

OCEANA NAS (APOLLO SOUCEK FIELD) (KNTU)

Amtd 4 03JAN19

TACAN RWY 23L/R

NE-3, 31 DEC 2020 to 28 JAN 2021