

VIRGINIA BEACH, VIRGINIA

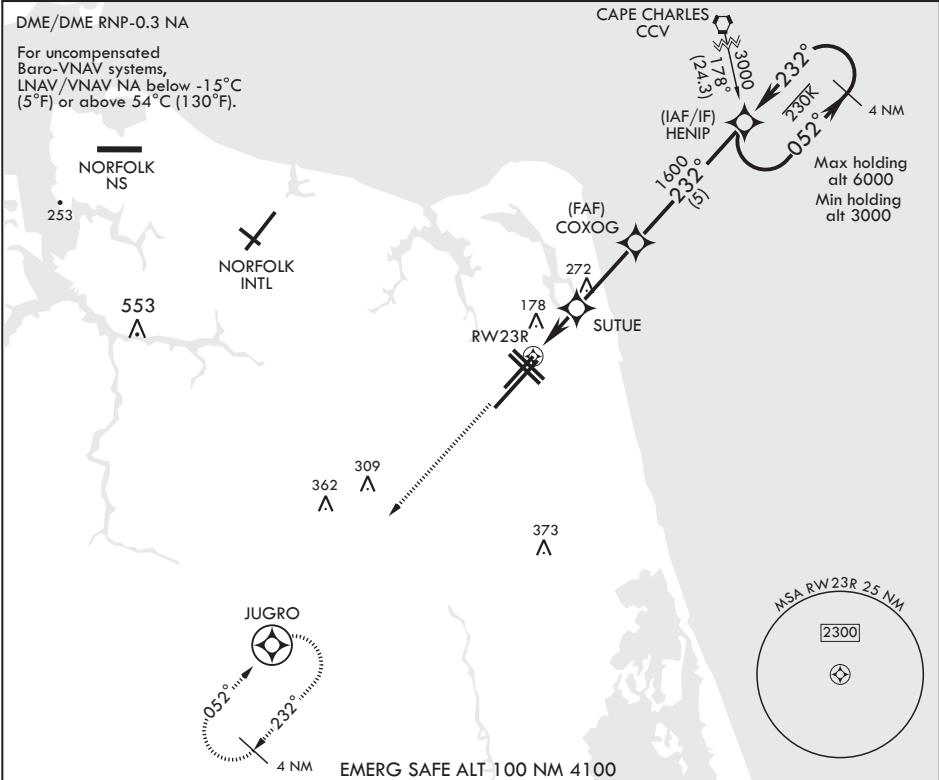
RNAV (GPS) RWY 23R

WAAS CH 71079 W23B	APCH CRS 232°	Rwy ldg TDZE Arpt Elev	8000 21 22
--------------------------	------------------	------------------------------	------------------

AL-934 (USN) OCEANA NAS (APOLLO SOUCEK FLD) (KNTU)

MISSED APPROACH: Climb to 3000 direct JUGRO and hold. Continue climb in hold to 3000.	
---------------------------------------------------------------------------------------	--

ATIS 317.6	OCEANA APP CON 123.9 266.8	TOWER 127.075 360.2	GND CON 119.6 336.4	CLNC DEL 254.4	ASR/PAR
---------------	-------------------------------	------------------------	------------------------	-------------------	---------



3000	JUGRO	Glidepath not coincident with PAR.	HENIP	ELEV 22	TDZE 21
			052°		
			232°		
			1600		
			GP 3.04°		
			TCH 55		
			2 NM		
			2.7 NM		
CATEGORY	A	B	C	D	
LPV DA	221-¾	200	(200-¾)		
LNAV/VNAV DA	446-1⅞	425	(500-1⅞)		
LNAV MDA	460-1	439 (500-1)	460-1¼ 439 (500-1¼)		
CIRCLING	500-1	478 (500-1)	640-1¾ 618 (700-1¾)	640-2 618 (700-2)	

VIRGINIA BEACH, VIRGINIA

36°49'N - 76°02'W OCEANA NAS (APOLLO SOUCEK FLD) (KNTU)

Amdt 3 10OCT19

RNAV (GPS) RWY 23R

NE-3, 31 DEC 2020 to 28 JAN 2021

NE-3, 31 DEC 2020 to 28 JAN 2021