

HI-TACAN RWY 5L

TACAN NTU Chan 113	APCH CRS 043°	Rwy Idg 8000 TDZE 20 Arpt Elev 22	JAL-934 [USN]	OCEANA NAS (APOLLO SOUCEK FIELD)	(KNTU)
------------------------------	-------------------------	--	---------------	----------------------------------	--------

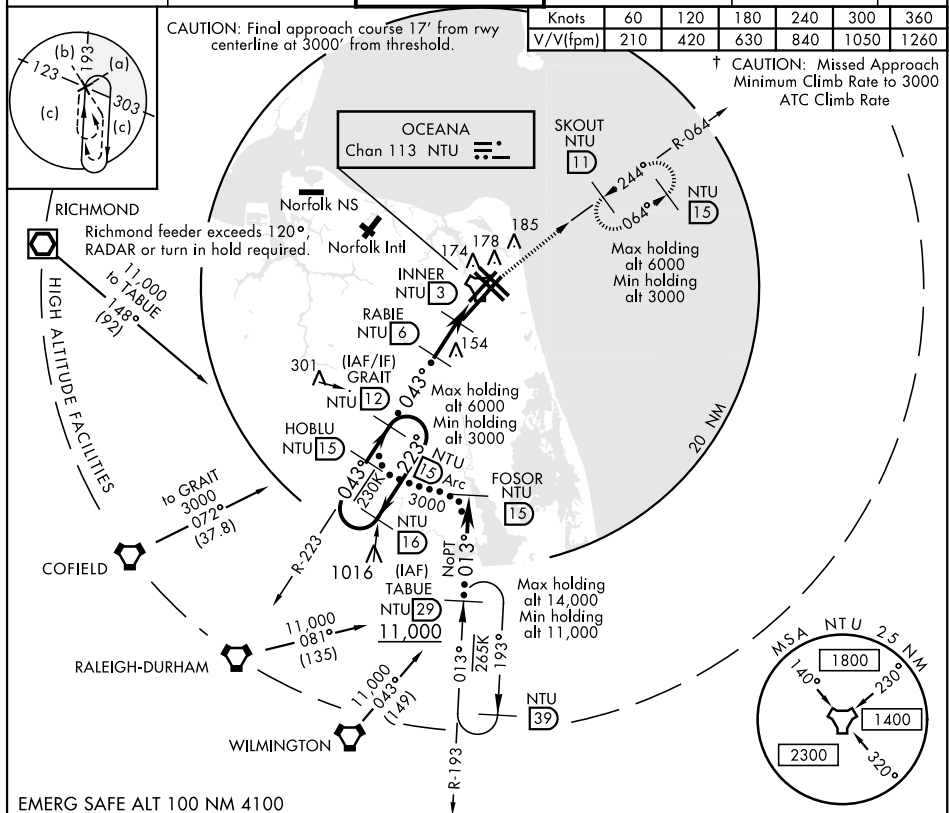
† MISSED APPROACH: Climb to 3000 via R-223 to NTU TACAN and via R-064 to SKOUT and hold.

ATIS 317.6	APP CON 123.9 266.8	OCEANA TOWER 127.075 360.2	GND CON 119.6 336.4	CLNC DEL 254.4	ASR/ PAR
---------------	------------------------	-------------------------------	------------------------	-------------------	-------------

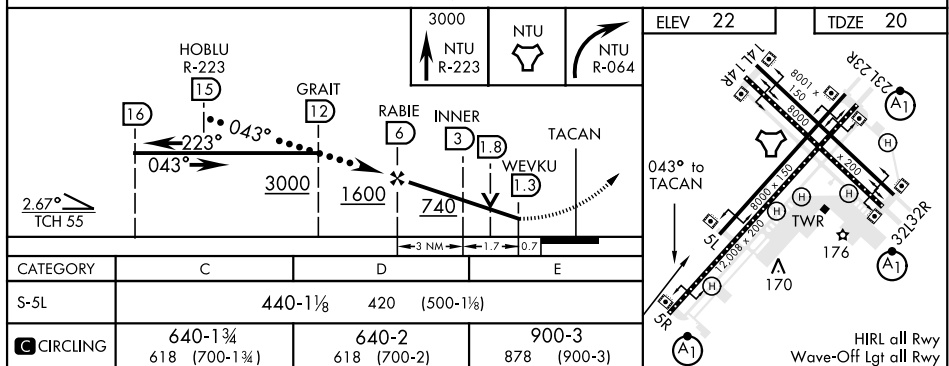
Knots	60	120	180	240	300	360
V/V(fpm)	210	420	630	840	1050	1260

CAUTION: Final approach course 17' from rwy centerline at 3000' from threshold.

† CAUTION: Missed Approach
Minimum Climb Rate to 3000
ATC Climb Rate



NE-3, 31 DEC 2020 to 28 JAN 2021



VIRGINIA BEACH, VIRGINIA

36°49'N-76°02'W

OCEANA NAS (APOLLO SOUCEK FIELD) (KNTU)

Amdt 4 10OCT19

HI-TACAN RWY 5L