


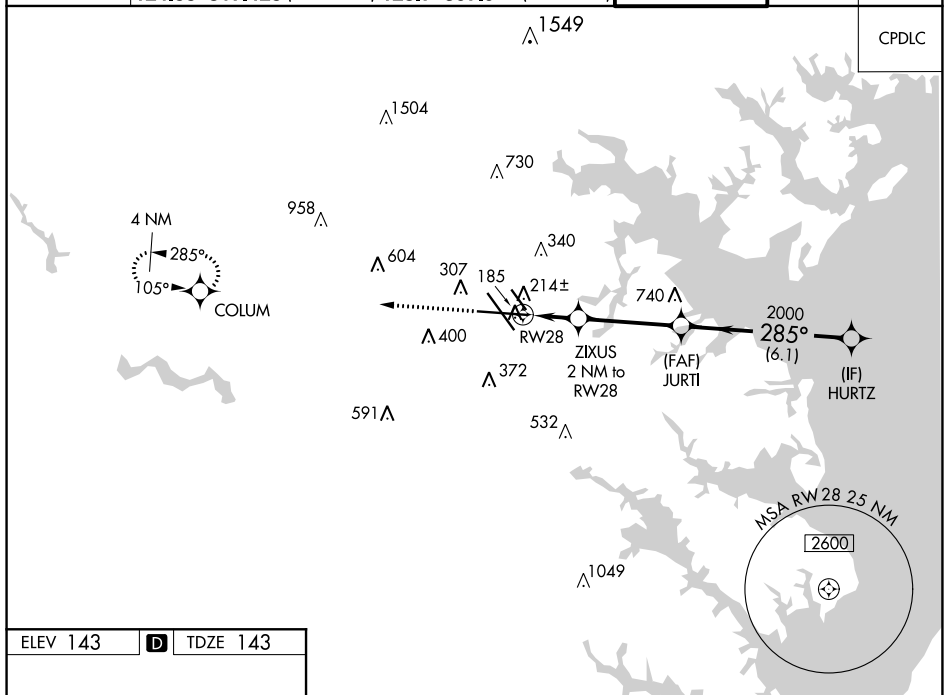


WAAS CH 48808 W28A	APP CRS 285°	Rwy Idg 9803 TDZE 143 Apt Elev 143
--	------------------------	---

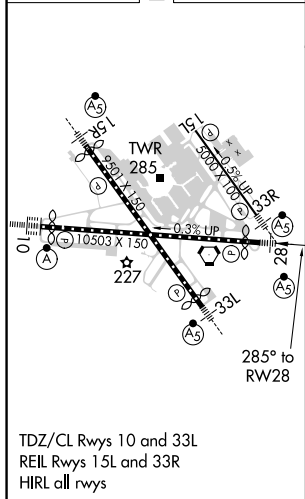
RNAV (GPS) Y RWY 28

BALTIMORE/WASHINGTON INTL THURGOOD MARSHALL (BWI)

RNP APCH.				MALSR		MISSED APPROACH: Climb to 2500 direct COLUMN and hold.	
 For uncompensated Baro-VNAV systems, LNAV/VNAV NA below -12°C (11°F) or above 54°C (130°F). For inop ALS, increase LNAV/VNAV all Cats visibility to RVR 4000. **RVR 1800 authorized with use of FD or AP or HUD to DA. 							
D-ATIS		POTOMAC APP CON		BALTIMORE TOWER		GND CON	
115.1 127.8	119.0 282.275 124.55 317.425	(020°-100°) (101°-130°)	119.7 309.475 128.7 297.9	(131°-180°) (181°-019°)	119.4 257.8	121.9	118.05



ELEV 143	D	TDZE 143
----------	----------	----------



<div style="display: flex; justify-content: space-between;"> 2500 COLUM </div> <p>* LNAV only.</p> <p>* 0.9 NM to RW28</p> <p>RW28</p> <p>ZIXUS 2 NM to RW28</p> <p>JURTI 2000</p> <p>HURTZ</p> <p>*820</p> <p>285°</p> <p>2000</p> <p>GP 3.00° TCH 55</p> <p>0.9 NM 1.1 NM 3.7 NM 6.1 NM</p>					
CATEGORY		A	B	C	D
LPV	DA **	343/24		200 (200-½)	
LNAV/ VNAV	DA	395/24		252 (300-½)	
LNAV	MDA	480/24	337 (400-½)	480/26	337 (400-½)
C CIRCLING		640-1 497 (500-1)	660-1 517 (600-1)	700-1 ½ 557 (600-1 ½)	860-2 ¼ 717 (800-2 ¼)