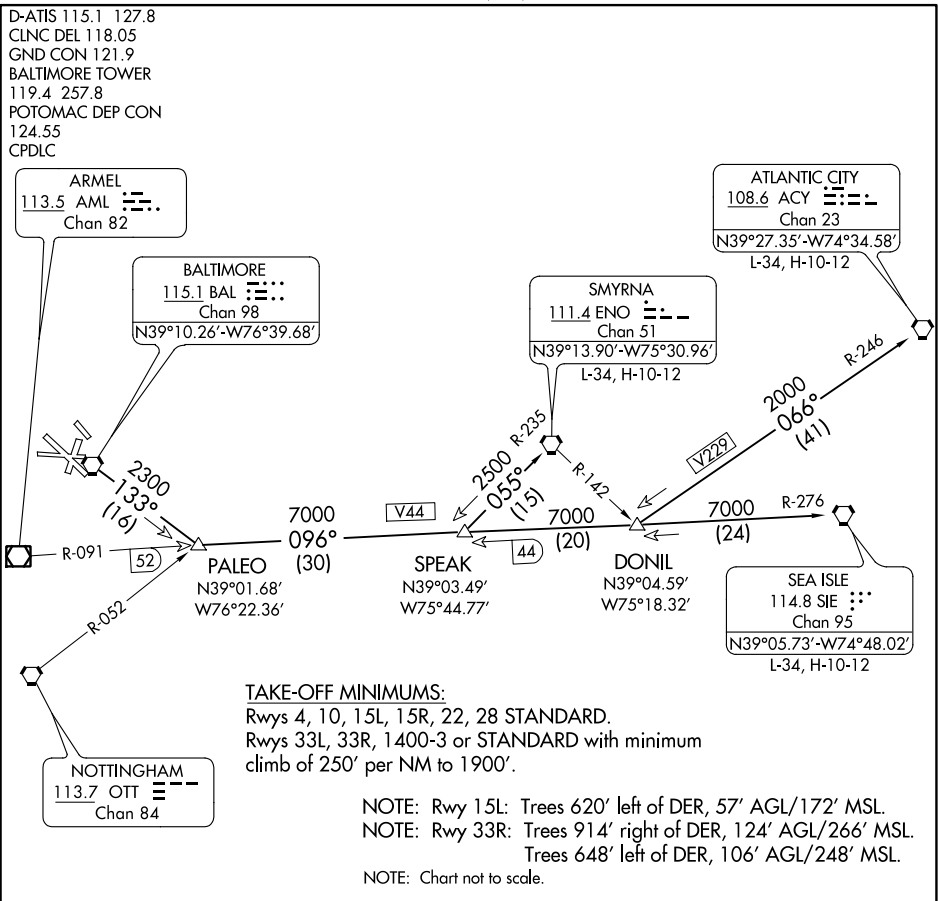


(PALEO3.PALEO) 20366
PALEO THREE DEPARTURE

BALTIMORE/
WASHINGTON INTL THURGOOD MARSHALL (BWI)
AL-804 (FAA)
BALTIMORE, MARYLAND



DEPARTURE ROUTE DESCRIPTION

TAKE-OFF RWY 28:
JETS: Fly runway heading until 3 DME, then turn left heading 150°. Thence . . .
PROPS: Fly runway heading. Thence . . .
TAKE-OFF ALL OTHER RUNWAYS: Fly runway heading. Thence . . .
. . . . For vectors to transition or assigned route, expect clearance to filed altitude ten minutes after departure.

ATLANTIC CITY TRANSITION (PALEO3.ACY): From over BAL VORTAC via BAL R-133 to PALEO INT, then via SIE VORTAC R-276 to DONIL INT, then via ACY VORTAC R-246 to ACY VORTAC.

SEA ISLE TRANSITION (PALEO3.SIE): From over BAL VORTAC via BAL R-133 to PALEO INT, then via SIE VORTAC R-276 to SIE VORTAC.

SMYRNA TRANSITION (PALEO3.ENO): From over BAL VORTAC via BAL R-133 to PALEO INT, then via SIE VORTAC R-276 to SPEAK INT, then via ENO VORTAC R-235 to ENO VORTAC.

NE-3, 31 DEC 2020 to 28 JAN 2021

NE-3, 31 DEC 2020 to 28 JAN 2021