

POTOMAC APP CON  
133.75 254.35  
BWI D-ATS  
115.1 127.8

NOTE: RADAR required.  
NOTE: RNAV 1.  
NOTE: DME/DME/IRU or GPS required.  
NOTE: Turbopjet aircraft only.

BALTIMORE/  
WASHINGTON INTL  
THURGOOD MARSHALL

MARTIN STATE

ARRIVAL ROUTE DESCRIPTION

LAFIN TRANSITION (LAFIN.MIDY2)

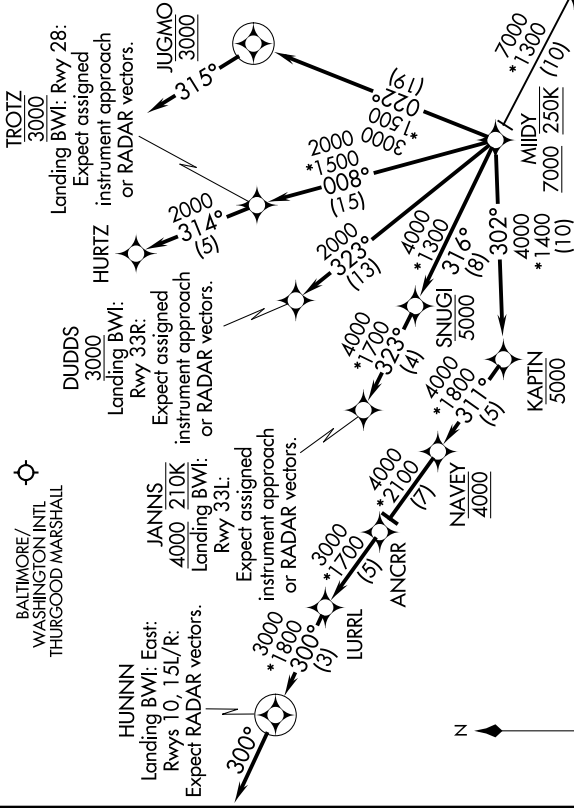
LANDING KBWI RWYS 10, 15L/R: From MIDY on track 302° to cross KAPTIN at or below 5000, then on track 311° to cross NAVEY at 4000, then on track 311° to ANCR, then on track 311° to LURRL, then on track 300° to HUNNIN, then on track 300°. Expect RADAR vectors to final approach course.

LANDING BWI RWY 28: From MIDY on track 008° to cross TROTZ at 3000, then on track 314° to HURTZ. Expect assigned instrument approach or RADAR vectors.

LANDING BWI RWY 33L: From MIDY on track 316° to cross SNUGI at or below 5000, then on track 323° to cross JANNIS at or above 4000 and at 210K. Expect assigned instrument approach or RADAR vectors.

LANDING BWI RWY 33R: From MIDY on track 323° to cross DUDDS at or above 3000. Expect assigned instrument approach or RADAR vectors.

LANDING MTN: From MIDY on track 022° to cross JUGMO at 3000, then on heading 315°. Expect RADAR vectors to final approach course.



NOTE: Chart not to scale.